

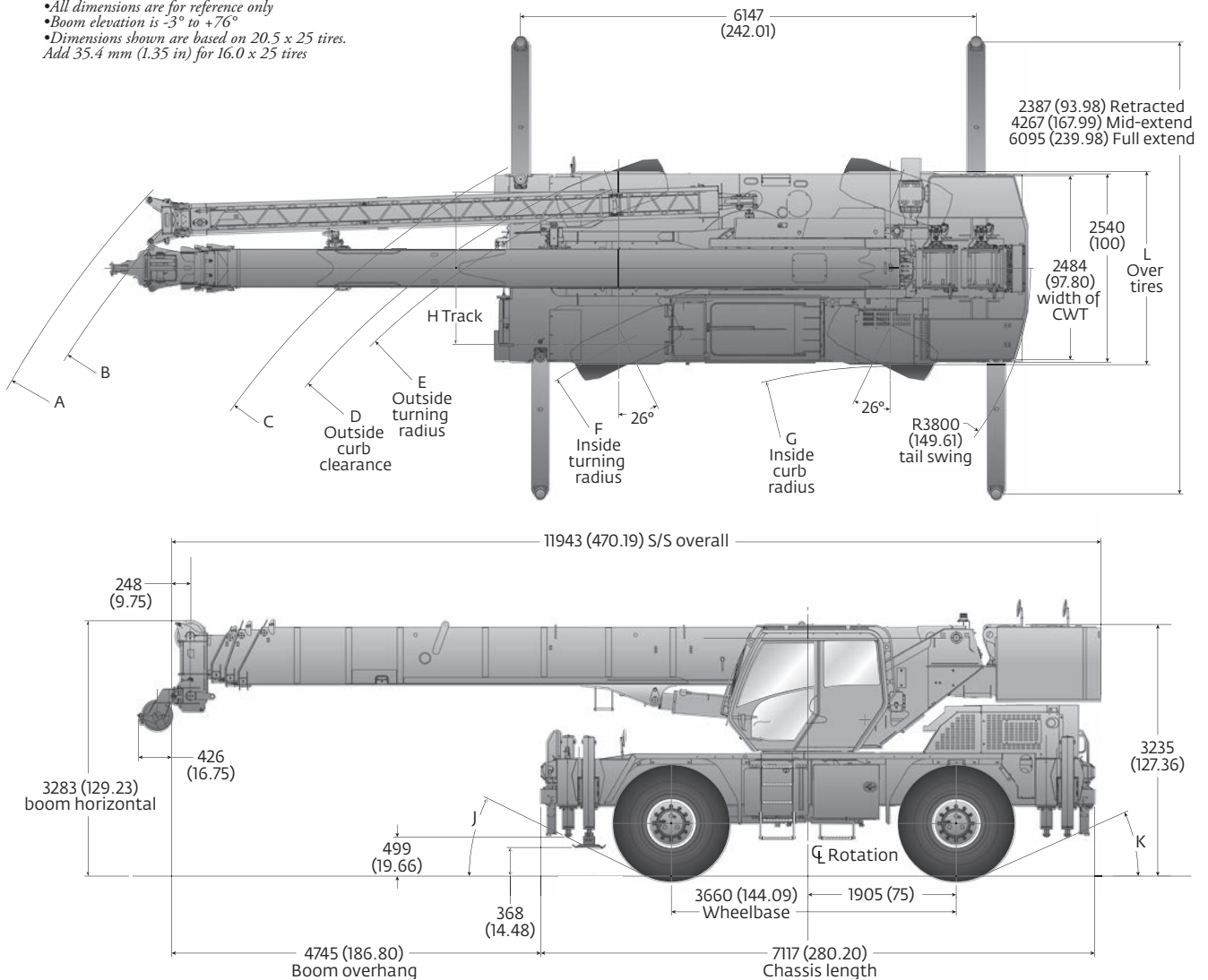
Dimensions and weights

Dimensions

	Tire size	A	B	C	D	E	F	G	H	J	K	L
2-wheel steer	20.5 x 25	13 563 mm (534 in)	13 328 mm (525 in)	10 899 mm (429 in)	10 236 mm (403 in)	10 007 mm (394 in)	8138 mm (320 in)	7021 mm (276 in)	2055 mm (81 in)	25.0°	23.0°	2606 mm (103 in)
	16.0 x 25	13 563 mm (534 in)	13 328 mm (525 in)	10 899 mm (429 in)	10 185 mm (401 in)	9981 mm (393 in)	8138 mm (320 in)	7021 mm (276 in)	2093 mm (82 in)	26.0°	24.0°	2536 mm (100 in)
4-wheel steer	20.5 x 25	9797 mm (386 in)	9490 mm (374 in)	6732 mm (265 in)	6061 mm (239 in)	5832 mm (230 in)	4000 mm (157 in)	3498 mm (137 in)	2055 mm (81 in)	25.0°	23.0°	2606 mm (103 in)
	16.0 x 25	9797 mm (386 in)	9490 mm (374 in)	6732 mm (265 in)	6010 mm (237 in)	5806 mm (229 in)	4000 mm (157 in)	3498 mm (137 in)	2093 mm (82 in)	26.0°	24.0°	2536 mm (100 in)

Notes:

- All dimensions are for reference only
- Boom elevation is -3° to $+76^{\circ}$
- Dimensions shown are based on 20.5 x 25 tires.
- Add 35.4 mm (1.35 in) for 16.0 x 25 tires



Weights

	Gross		Front		Rear	
	kg	lb	kg	lb	kg	lb
Basic Machine: including 31 m (102 ft) main boom, main hoist with 137 m (450 ft) of rope, full counterweight + IPO, 6.8 t (7.5 USt) headache ball, and 35 t (40 USt) hook block: Tier 4F engine.	27 950	61,618	13 157	29,005	14 793	32,613
Add: Auxiliary hoist + 137 m (450 ft) of 35 x 7 hoist cable and auxiliary boom nose ILO IPO counterweight	28 177	62,118	13 234	29,176	14 942	32,942
Add: 7.9 - 13.7 m (26 ft - 45 ft) telescopic boom extension + extension hangers	29 038	64,016	14 662	32,324	14 375	31,692