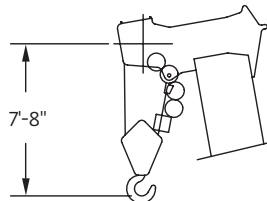
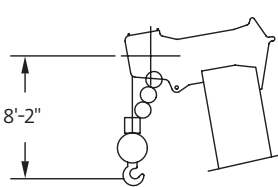
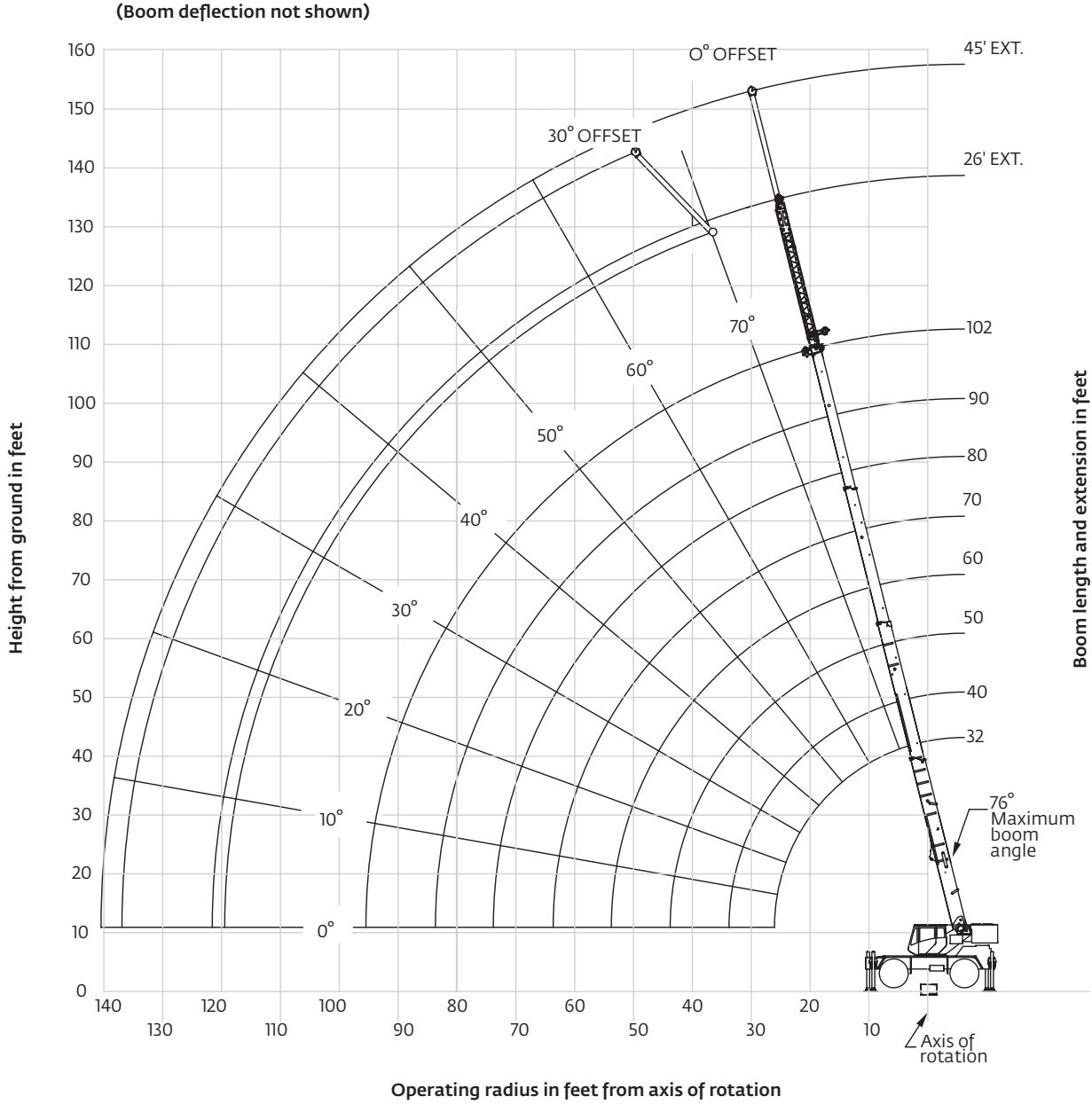


# Working range

102 ft main boom + 26 ft – 45 ft extension



Dimensions are for largest Grove furnished hook block and headache ball, with anti-two block activated.

# Load chart



Feet	Main boom length in feet							
	32	40	50	60	70	80	90	102
8	80,000 (69)	—	—	—	—	—	—	—
10	72,200 (65)	50,700 (70.5)	48,500 (75)	—	—	—	—	—
12	61,000 (61)	50,700 (67.5)	48,500 (72.5)	46,400* (76)	—	—	—	—
15	47,950 (54)	48,400 (62.5)	48,500 (69)	44,300 (73)	38,700* (76)	—	—	—
20	34,550 (41)	35,000 (53.5)	35,400 (62.5)	35,300 (67.5)	31,000 (71.5)	29,700 (74)	22,000* (76)	—
25	26,300 (20.5)	26,800 (43.5)	27,200 (55.5)	27,400 (62.5)	25,800 (67)	24,600 (70.5)	22,000 (73)	18,500* (76)
30	—	21,250 (30)	21,650 (47.5)	21,850 (56.5)	25,800 (62.5)	20,800 (66.5)	18,350 (69.5)	17,500 (73)
35	—	—	17,650 (38.5)	17,900 (50.5)	18,050 (57.5)	17,800 (62.5)	15,600 (66)	15,200 (70)
40	—	—	14,400 (26.5)	14,450 (43.5)	14,650 (52.5)	14,800 (58.5)	13,500 (62.5)	13,200 (66.5)
45	—	—	—	11,650 (35)	11,800 (46.5)	11,900 (54)	11,750 (59)	11,600 (63.5)
50	—	—	—	9480 (24.5)	9680 (40.5)	9770 (49)	9780 (55)	9790 (60.5)
55	—	—	—	—	7970 (33)	8080 (44)	8110 (51)	8130 (57)
60	—	—	—	—	6600 (23)	6720 (38)	6770 (46.5)	6800 (53.5)
65	—	—	—	—	—	5590 (31)	5670 (42)	5710 (49.5)
70	—	—	—	—	—	4640 (21.5)	4740 (36)	4800 (45.5)
75	—	—	—	—	—	—	3940 (29.5)	4040 (41)
80	—	—	—	—	—	—	3250 (21)	3360 (36)
85	—	—	—	—	—	—	—	2770 (30.5)
90	—	—	—	—	—	—	—	2250 (23)
95	—	—	—	—	—	—	—	1800 (9.5)
Minimum boom angle (°) for indicated length (no load)								0
Maximum boom length (ft) at 0° boom angle (no load)								102

\*This capacity is based on maximum boom angle  
NOTE: ( ) Boom angles are in degrees.

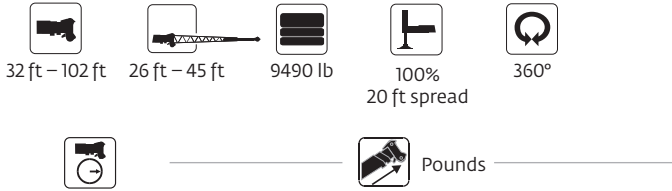
Boom angle	Lifting capacities at 0° boom angle							
	32 ft	40 ft	50 ft	60 ft	70 ft	80 ft	90 ft	102 ft
0°	24,950 (26)	18,100 (33.8)	12,150 (43.8)	8180 (53.8)	5740 (63.8)	4030 (73.8)	2800 (83.8)	1760 (95.5)

NOTE: ( ) Reference radii in feet.

A6-829-104278

THIS CHART IS ONLY A GUIDE AND SHOULD NOT BE USED TO OPERATE THE CRANE.  
The individual crane's load chart, operating instructions and other instructional plates must be read and understood prior to operating the crane.

# Load chart



Feet	26 ft length			45 ft length		
	0° offset	15° offset	30° offset	0° offset	15° offset	30° offset
35	10,200* (76)	—	—	—	—	—
40	9460 (72.5)	7770* (76)	—	5250* (76)	—	—
45	8760 (70)	7370 (72)	6030* (76)	5250 (73.5)	—	—
50	8150 (67.5)	6870 (69.5)	5780 (72.5)	5050 (71.5)	3660 (76)	—
55	7510 (65)	6050 (67)	5520 (70)	4650 (69.5)	3540 (72.5)	—
60	6700 (62.5)	5350 (64.5)	5290 (67.5)	4290 (67)	3430 (70.5)	3000* (76)
65	5990 (60)	4740 (62)	4810 (64.5)	4000 (65)	3320 (68.5)	2890 (72.5)
70	5240 (57.4)	4210 (59)	4270 (62)	3800 (63)	3220 (66)	2790 (70.5)
75	4400 (54.5)	3750 (56)	3800 (59)	3650 (60.5)	3130 (64)	2700 (68)
80	3670 (51.5)	3330 (53.5)	3380 (56)	3520 (58.5)	3000 (61.5)	2620 (65.5)
85	3050 (48.5)	2960 (50.5)	3010 (53)	3360 (56)	2880 (59)	2550 (63)
90	2500 (45)	2590 (47)	2670 (49.5)	3030 (53.5)	2770 (56.5)	2480 (60.5)
95	2020 (41.5)	2130 (43.5)	2270 (46)	2640 (51)	2680 (54)	2410 (57.5)
100	1590 (38)	1680 (40)	1790 (41.5)	2270 (48)	2570 (51.5)	2380 (55)
105	1200 (33.5)	1280 (35.5)	1360 (37)	1930 (45.5)	2260 (48.5)	2310 (52)
110	—	—	—	1630 (42.5)	1890 (45.5)	2030 (48.5)
115	—	—	—	1330 (39)	1550 (42)	1700 (45)
120	—	—	—	1040 (35.5)	1240 (38.5)	1400 (41)
125	—	—	—	—	—	1080 (36.5)
Min. boom angle for indicated length (no load)	29°	30.5°	36°	34°	34.5°	35°
Max. boom length at 0° boom angle (no load)	80 ft			80 ft		

NOTE: ( ) Boom angles are in degrees.

\*This capacity is based on maximum obtainable boom angle.

A6-829-104322

## Boom extension capacity notes:

1. All capacities above the bold line are based on structural strength of boom extension.
2. 26 ft fixed extension lengths may be used for single line lifting service.
3. Radii listed are for a fully extended boom with the boom extension erected. For main boom lengths less than fully extended, the rated loads are determined by boom angle. Use only the column which corresponds to the boom extension length and offset for which the machine is configured. For boom angles not shown, use the rating of the next lower boom angle.

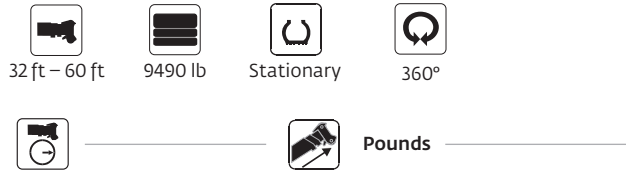
**Warning:** Operation of this machine with heavier loads than the capacities listed is strictly prohibited. Machine tipping with boom extension occurs rapidly and without advance warning.

4. Boom angle is the angle above or below horizontal of the longitudinal axis of the boom base section after lifting rated load.
5. Capacities listed are with outriggers fully extended and vertical jacks set only.
6. When lifting over the main boom nose with 26 ft fixed extension erected, the outriggers must be fully extended or 50% extended (14 ft spread).

THIS CHART IS ONLY A GUIDE AND SHOULD NOT BE USED TO OPERATE THE CRANE.

The individual crane's load chart, operating instructions and other instructional plates must be read and understood prior to operating the crane.

# Load chart



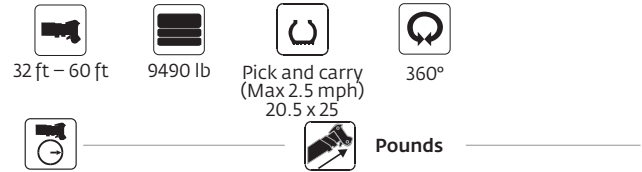
Feet	Main boom length in feet			
	32	40	50	60
10	24,050 (65)	24,100 (70.5)	23,000 (76)	—
12	21,600 (61)	22,050 (50)	21,600 (72.5)	—
15	15,250 (54)	15,550 (62.5)	16,100 (68.5)	13,900 (72.5)
20	9110 (41)	9380 (53.5)	9860 (62)	9860 (67.5)
25	5790 (20)	6050 (43)	6400 (55)	6510 (62)
30	—	3970 (29.5)	4240 (47.5)	4370 (56)
35	—	—	2770 (38)	2900 (50)
40	—	—	1,690 (26)	1840 (43)
45	—	—	—	1030 (34.5)
Min. boom angle for indicated length (no load)				33°
Max. boom length at 0° boom angle (no load)				50 ft

NOTE: ( ) Boom angles are in degrees.

Boom angle	Lifting capacities at 0° boom angle			
	32	40	50	60
0°	5290 (26)	2850 (33.8)	1060 (43.8)	—

NOTE: ( ) Reference radii in feet.

A6-829-104281



Feet	Main boom length in feet			
	32	40	50	60
10	27,150 (65)	26,900 (70.5)	—	—
12	23,350 (61)	23,350 (67.5)	—	—
15	18,950 (54)	19,100 (62.5)	19,400 (69)	—
20	13,700 (41)	14,200 (53.5)	14,500 (62.5)	14,550 (67.5)
25	10,100 (20)	10,750 (43.5)	11,150 (55.5)	11,200 (62)
30	—	8290 (30)	8620 (47.5)	8790 (56.5)
35	—	—	6710 (38.5)	6890 (50)
40	—	—	5210 (26.5)	5390 (43)
45	—	—	—	4180 (35)
50	—	—	—	3190 (24)
Min. boom angle for indicated length (no load)				0°
Max. boom length at 0° boom angle (no load)				60 ft

NOTE: ( ) Boom angles are in degrees.

Boom angle	Lifting capacities at 0° boom angle			
	32	40	50	60
0°	9520 (26)	6830 (33.8)	4280 (43.8)	2560 (53.8)

NOTE: ( ) Reference radii in feet.

A6-829-104282

## Notes to all rubber capacity charts:

- Capacities are in pounds and do not exceed 75% of tipping loads as determined by test in accordance with SAE J765.
- Capacities are applicable to machines equipped with 20.5 x 25 (24 ply) tires at 75 psi cold inflation pressure, and 16.00 x 25 (28 ply) tires at 100 psi cold inflation pressure.
- Capacities appearing above the bold line are based on structural strength and tipping should not be relied upon as a capacity limitation.
- Capacities are applicable only with machine on firm level surface.
- On rubber lifting with boom extensions not permitted.
- For pick and carry operation, boom must be centered over front of machine, mechanical swing lock engaged and load restrained from swinging. When handling loads in the structural range with capacities close to maximum ratings, travel should be reduced to creep speeds.
- Axle lockouts must be functioning when lifting on rubber.
- All lifting depends on proper tire inflation, capacity and condition. Capacities must be reduced for lower tire inflation pressures. See lifting capacity chart for tire used. Damaged tires are hazardous to safe operation of crane.
- Creep – Not over 200 ft of movement in any 30 minute period and not exceeding 1 mph.

THIS CHART IS ONLY A GUIDE AND SHOULD NOT BE USED TO OPERATE THE CRANE.  
The individual crane's load chart, operating instructions and other instructional plates must be read and understood prior to operating the crane.

# Load chart



Feet	Main boom length in feet							
	32	40	50	60	70	80	90	102
8	77,000 (69)	—	—	—	—	—	—	—
10	66,250 (65)	50,700 (70.5)	48,500 (75)	—	—	—	—	—
12	57,950 (61)	50,700 (67.5)	48,500 (72.5)	46,400* (76)	—	—	—	—
15	46,300 (54)	44,200 (62.5)	41,800 (69)	39,550 (73)	37,550* (76)	—	—	—
20	27,100 (41)	27,700 (53.5)	27,050 (62.5)	25,950 (67.5)	24,950 (71.5)	24,000 (74)	22,000* (76)	—
25	17,650 (20.5)	18,250 (43.5)	18,500 (55.5)	18,450 (62.5)	18,050 (67)	17,450 (70.5)	16,950 (73)	16,350* (76)
30	—	12,850 (30)	13,200 (47.5)	13,300 (56.5)	13,550 (62.5)	13,250 (66.5)	12,950 (69.5)	12,500 (73)
35	—	—	9790 (38.5)	9910 (50.5)	10,150 (57.5)	10,250 (62.5)	10,100 (66)	9830 (70)
40	—	—	7400 (26.5)	7520 (43.5)	7770 (53.5)	7910 (58.5)	7950 (62.5)	7820 (66.5)
45	—	—	—	5760 (35)	5970 (46.5)	6150 (54)	6180 (59)	6190 (63.5)
50	—	—	—	4410 (24.5)	4590 (40.5)	4750 (49)	4820 (55)	4850 (60.5)
55	—	—	—	—	3500 (33)	3630 (44)	3710 (51)	3780 (57)
60	—	—	—	—	2610 (23)	2730 (38)	2810 (46.5)	2890 (53.5)
65	—	—	—	—	—	1980 (31)	2070 (42)	2150 (49.5)
70	—	—	—	—	—	1350 (21.5)	1440 (36)	1530 (45.5)
75	—	—	—	—	—	—	—	1000 (41)
Min. boom angle for indicated length (no load)						0°	21°	36°
Max. boom length at 0° boom angle (no load)						—	80	—

NOTE: ( ) Boom angles are in degrees.  
\*This capacity is based on maximum obtainable boom angle.

Boom angle	Lifting capacities at 0° boom angle				
	32	40	50	60	70
0°	16,300 (26)	10,150 (33.8)	6030 (43.8)	3580 (53.8)	2050 (63.8)

NOTE: ( ) Reference radii in feet. A6-829-104279



Feet	Main boom length in feet							
	32	40	50	60	70	80	90	102
8	51,950 (69)	—	—	—	—	—	—	—
10	37,800 (65)	35,900 (70.5)	33,600 (75)	—	—	—	—	—
12	29,050 (61)	28,100 (67.5)	26,600 (72.5)	25,150* (76)	—	—	—	—
15	20,850 (54)	20,450 (62.5)	19,750 (69)	18,850 (73)	18,000* (76)	—	—	—
20	12,500 (41)	13,050 (53.5)	12,950 (62.5)	12,600 (67.5)	12,150 (71.5)	11,700 (74)	11,250* (76)	—
25	7950 (20.5)	8460 (43.5)	8700 (55.5)	8760 (62.5)	8580 (67)	8300 (70.5)	8050 (73)	7720* (76)
30	—	5610 (30)	5890 (47.5)	6000 (56.5)	6110 (62.5)	5980 (66.5)	5840 (69.5)	5600 (73)
35	—	—	3980 (38.5)	4090 (50.5)	4350 (57.5)	4270 (62.5)	4200 (66)	4060 (70)
40	—	—	2600 (26.5)	2710 (43.5)	2940 (52.5)	2970 (58.5)	2940 (62.5)	2850 (66.5)
45	—	—	—	1670 (35)	1860 (46.5)	1960 (54)	1950 (59)	1890 (63.5)
50	—	—	—	—	1020 (40.5)	1160 (49)	1160 (55)	1110 (60.5)
Min. boom angle for indicated length (no load)				0°	33°	44°	51°	57°
Max. boom length at 0° boom angle (no load)				—	—	60	—	—

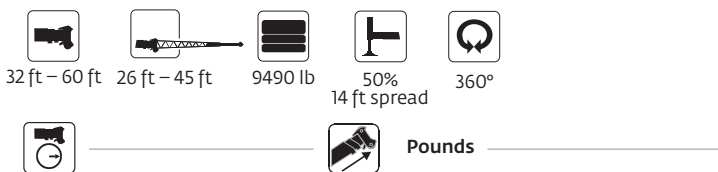
NOTE: ( ) Boom angles are in degrees.  
\*This capacity is based on maximum obtainable boom angle.

Boom angle	Lifting capacities at 0° boom angle		
	32	40	50
0°	7230 (26)	4060 (33.8)	1790 (43.8)

NOTE: ( ) Reference radii in feet. A6-829-104280

THIS CHART IS ONLY A GUIDE AND SHOULD NOT BE USED TO OPERATE THE CRANE.  
The individual crane's load chart, operating instructions and other instructional plates must be read and understood prior to operating the crane.

# Load chart



Feet	26 ft length			45 ft length		
	0° offset	15° offset	30° offset	0° offset	15° offset	30° offset
35	9120* (76)	—	—	—	—	—
40	7240 (72.5)	7770* (76)	—	*5250 (76)	—	—
45	5780 (70)	6460 (72)	6030* (76)	5250 (73.5)	—	—
50	4610 (67.5)	5200 (69.5)	5740 (72.5)	5050 (71.5)	3660 (76)	—
55	3650 (65)	4180 (67)	4650 (70)	4280 (69.5)	3540 (72.5)	—
60	2850 (62.5)	3320 (64.5)	3720 (67.5)	3480 (67)	3430 (70.5)	3000* (76)
65	2140 (60)	2550 (62)	2900 (64.5)	2820 (65)	3320 (68.5)	2890 (72.5)
70	1540 (57.5)	1900 (59)	2210 (62)	2260 (63)	2880 (66)	2790 (70.5)
75	1030 (54.5)	1350 (56)	1620 (59)	1740 (60.5)	2300 (64)	2700 (68)
80	—	—	1100 (56)	1300 (58.5)	1800 (61.5)	2240 (65.5)
85	—	—	—	—	1360 (59)	1750 (63)
90	—	—	—	—	—	1320 (60.5)
Min. boom angle for indicated length (no load)	51.5°	53.5°	53°	56°	56.5°	57.5°
Max. boom length at 0° boom angle (no load)	60 ft			60 ft		

NOTE: ( ) Boom angles are in degrees.

A6-829-104323

\*This capacity is based on maximum obtainable boom angle.

## Boom extension capacity notes:

1. All capacities above the bold line are based on structural strength of boom extension.
  2. 26 ft and 45 ft tele extension lengths may be used for single line lifting service.
  3. Radii listed are for a fully extended boom with the boom extension erected. For main boom lengths less than fully extended, the rated loads are determined by boom angle. Use only the column which corresponds to the boom extension length and offset for which the machine is configured. For boom angles not shown, use the rating of the next lower boom angle.
- Warning:** Operation of this machine with heavier loads than the capacities listed is strictly prohibited. Machine tipping with boom extension occurs rapidly and without advance warning.
4. Boom angle is the angle above or below horizontal of the longitudinal axis of the boom base section after lifting rated load.
  5. Capacities listed are with outriggers properly extended and vertical jacks set only.
  6. When lifting over the main boom nose with 26 ft fixed extension erected, the outriggers must be fully extended or 50% extended (14 ft spread).

THIS CHART IS ONLY A GUIDE AND SHOULD NOT BE USED TO OPERATE THE CRANE.

The individual crane's load chart, operating instructions and other instructional plates must be read and understood prior to operating the crane.