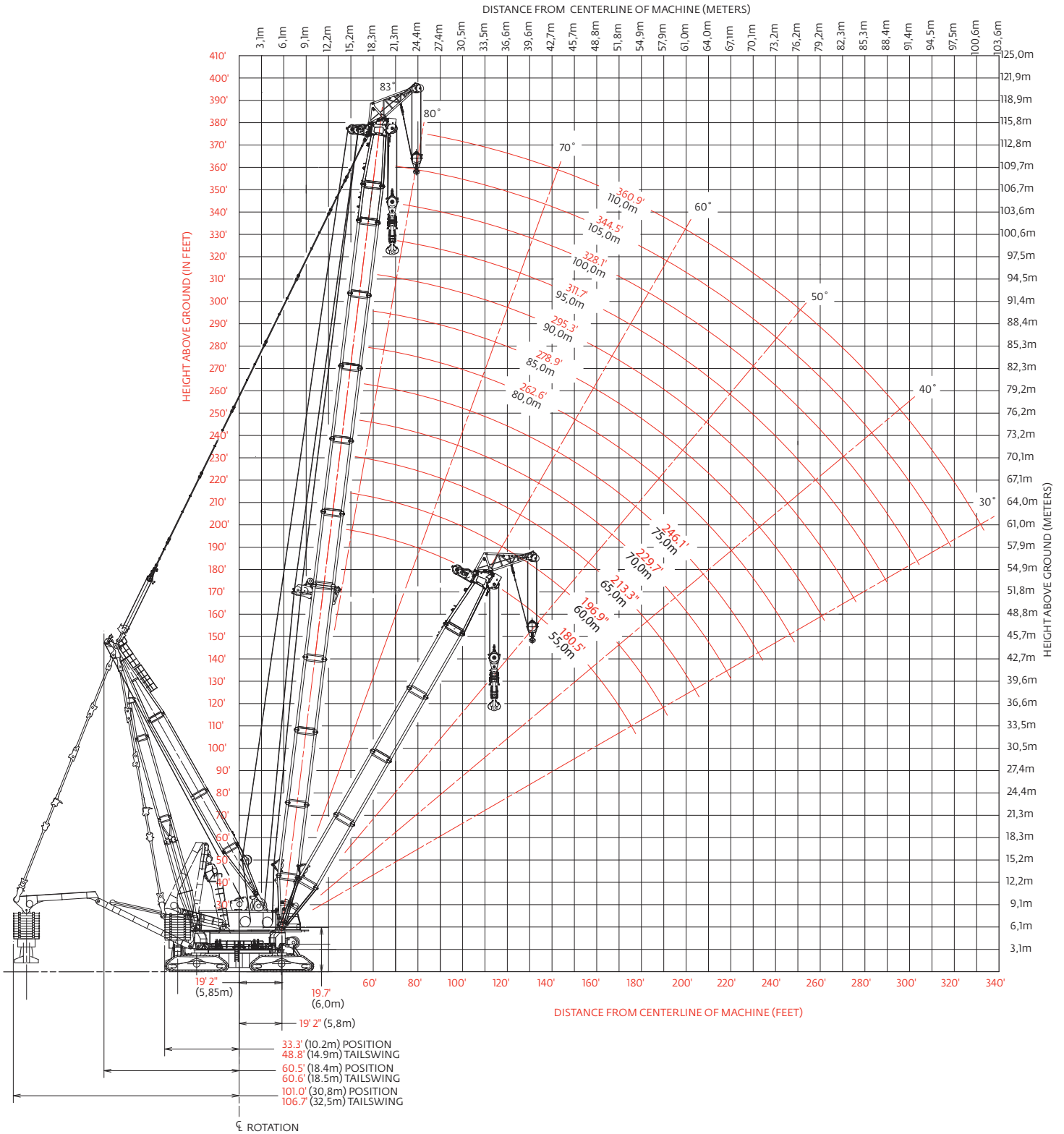


Heavy-lift boom range diagram

No. 90 main boom



Heavy-lift boom load charts

No. 90 main boom

963 884 kg (2,125,000 lb) Variable Position Counterweight (VPC)

360° Rating

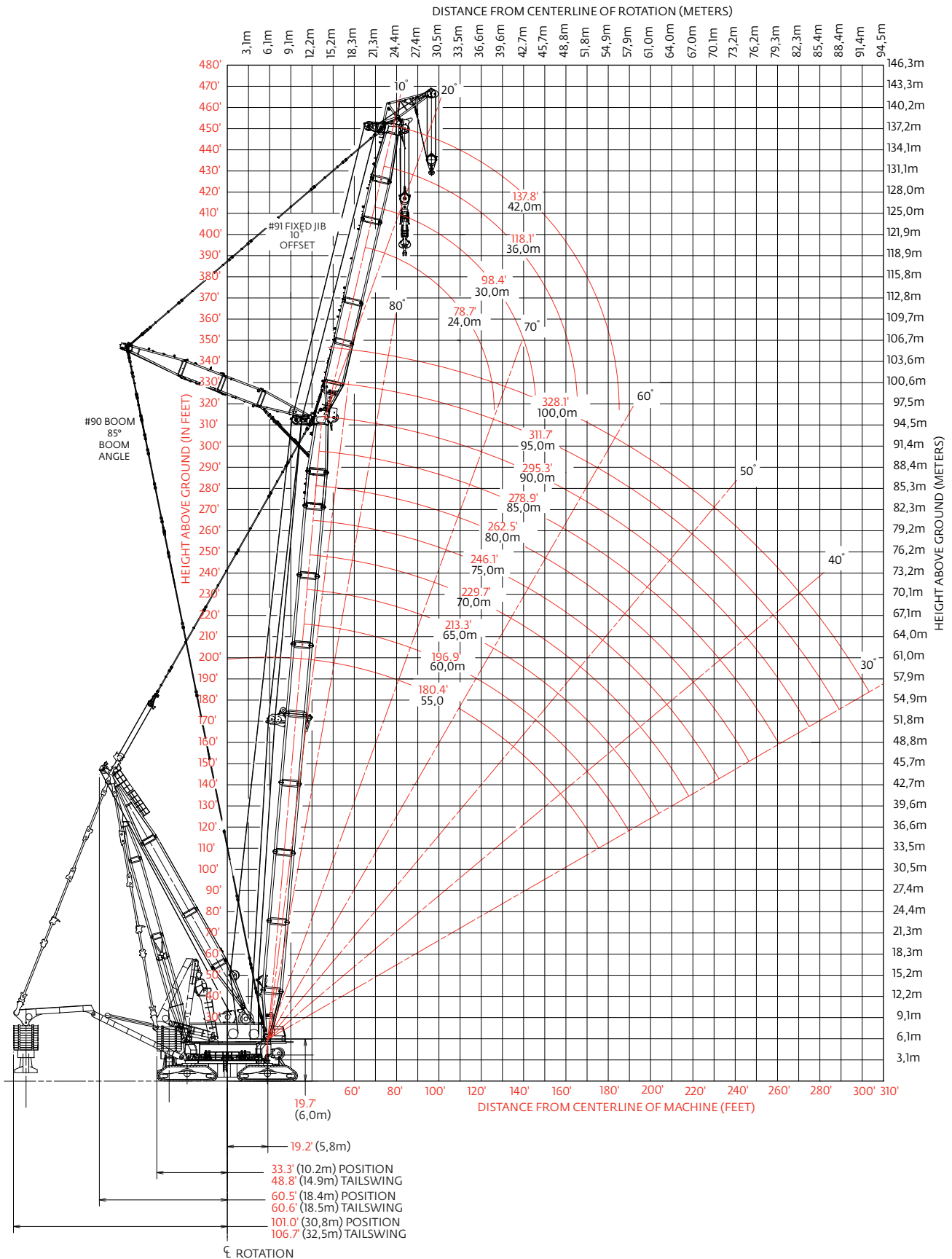
kg (lb) x1 000

Boom m (ft)	55,0 (180.4)	60,0 (196.9)	65,0 (213.2)	70,0 (229.7)	75,0 (246.1)	80,0 (262.5)	85,0 (278.9)	90,0 (295.3)	95,0 (311.7)	100,0 (328.1)	105,0 (344.5)	110,0 (360.9)
Radius												
13.4 (44)	2300* (5071)*											
15.2 (50)	2000 (4409)	1900 (4189)										
16 (55)	1976 (4306)	1898 (4179)	- (3985)	- (3774)	- (3446)							
18 (60)	1851 (4010)	1822 (3961)	1757 (3847)	1692 (3722)	1563 (3466)	- (3180)	- (2935)					
20 (70)	1687 (3520)	1680 (3504)	1650 (3489)	1599 (3386)	1556 (3290)	1442 (3180)	1331 (2935)	1227 (2705)	1131 (2493)	1039 (2291)	- (2146)	- (1931)
24 (80)	1440 (3131)	1433 (3115)	1429 (3107)	1418 (3090)	1384 (3019)	1343 (2930)	1301 (2847)	1227 (2705)	1131 (2493)	1039 (2291)	973 (2146)	876 (1931)
28 (90)	1254 (2817)	1247 (2801)	1243 (2793)	1236 (2777)	1233 (2768)	1210 (2707)	1179 (2636)	1144 (2557)	1116 (2485)	1039 (2291)	973 (2146)	876 (1931)
32 (100)	1107 (2556)	1100 (2541)	1097 (2532)	1090 (2517)	1086 (2508)	1079 (2492)	1072 (2449)	1042 (2380)	1016 (2317)	986 (2246)	957 (2146)	876 (1931)
36 (115)	984 (2238)	978 (2223)	975 (2216)	969 (2200)	966 (2192)	960 (2176)	957 (2168)	949 (2149)	932 (2097)	906 (2037)	882 (1982)	860 (1926)
40 (130)	858 (1919)	854 (1908)	852 (1903)	847 (1891)	845 (1886)	839 (1873)	836 (1868)	831 (1855)	828 (1849)	823 (1836)	813 (1810)	793 (1761)
44 (145)	724 (1584)	755 (1656)	753 (1652)	748 (1639)	745 (1634)	740 (1622)	737 (1616)	731 (1603)	729 (1598)	723 (1584)	720 (1579)	714 (1565)
48 (160)	612 (1306)	654 (1399)	672 (1452)	667 (1440)	664 (1435)	659 (1422)	656 (1417)	650 (1404)	648 (1398)	642 (1385)	639 (1379)	633 (1365)
52 (175)	512 (1060)	559 (1167)	594 (1248)	599 (1277)	597 (1273)	591 (1260)	589 (1255)	583 (1242)	580 (1236)	574 (1222)	572 (1217)	565 (1203)
56 (190)		473 (957)	513 (1053)	537 (1109)	539 (1134)	534 (1123)	532 (1118)	526 (1106)	523 (1101)	517 (1088)	515 (1082)	509 (1068)
60 (205)			439 (872)	468 (943)	488 (997)	484 (1007)	482 (1002)	476 (991)	474 (986)	469 (974)	466 (968)	460 (955)
64 (220)				404 (786)	430 (853)	441 (887)	439 (904)	433 (892)	431 (887)	426 (875)	423 (870)	418 (857)
68 (230)					374 (762)	390 (803)	401 (837)	396 (834)	394 (829)	388 (817)	386 (812)	380 (800)
72 (240)						341 (722)	358 (762)	363 (778)	361 (777)	355 (765)	353 (759)	347 (747)
76 (250)							315 (690)	324 (710)	332 (729)	326 (717)	324 (711)	318 (699)
80 (260)							- (619)	285 (645)	296 (669)	299 (672)	298 (667)	292 (655)
84 (270)								- (582)	262 (610)	266 (617)	272 (627)	269 (614)
88 (280)									228 (553)	235 (565)	243 (577)	242 (573)
92 (300)										205 (462)	215 (483)	216 (484)
96 (320)											187 (391)	190 (400)
100 (330)												166 (358)

*with 45,0 m (147.6 ft) boom and specially designed and manufactured equipment

Fixed jib range diagram

No. 91 fixed jib on No. 90 main boom



Fixed jib load charts

No. 91 fixed jib on No. 90 main boom

963 884 kg (2,125,000 lb) Variable Position Counterweight (VPC)

360° Rating

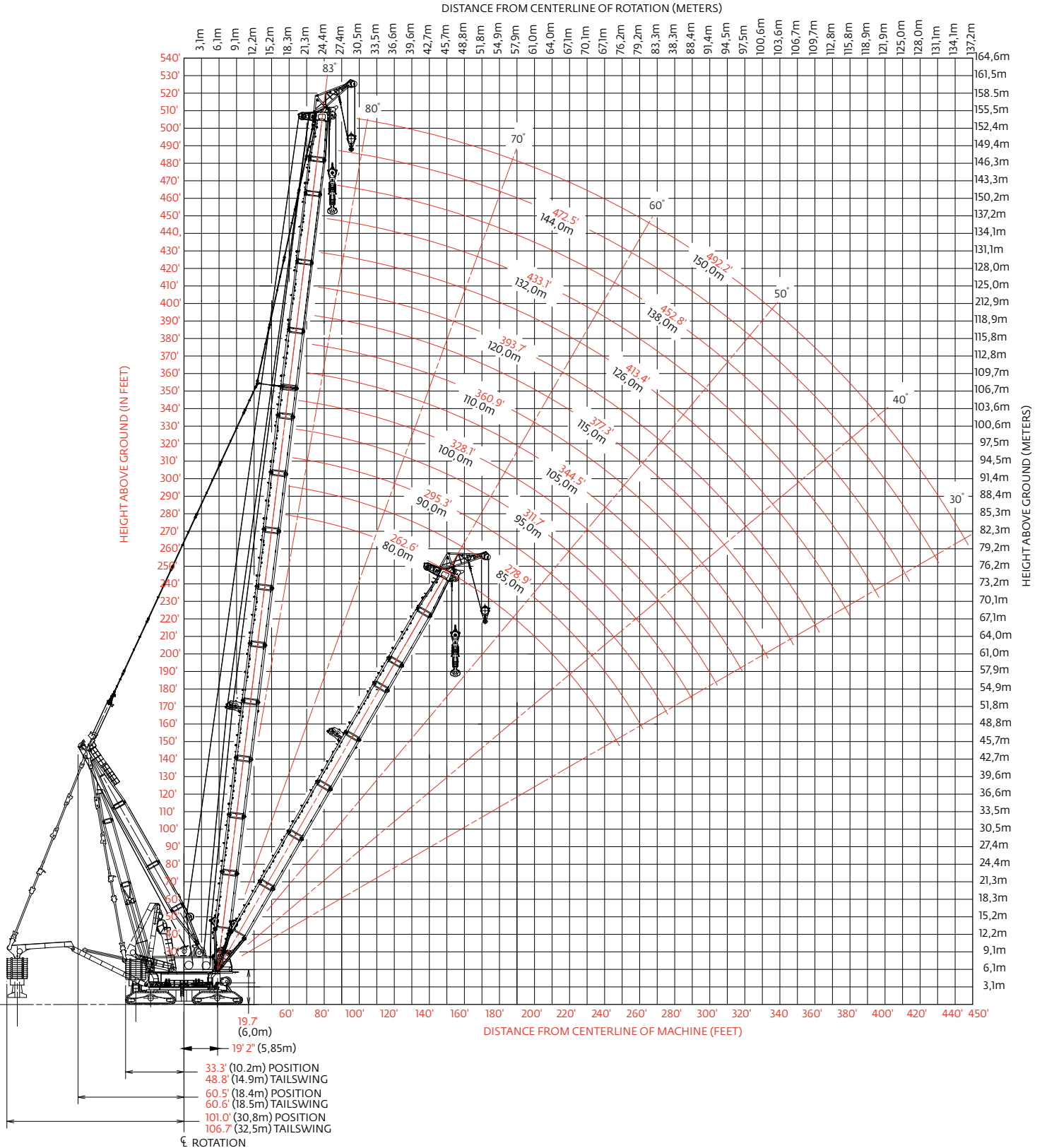
kg (lb) x1 000

		10° Offset						20° Offset					
Boom m (ft)		55,0 (180.4)	65,0 (213.2)	75,0 (246.1)	85,0 (278.9)	95,0 (311.7)	100,0 (328.0)	55,0 (180.4)	65,0 (213.2)	75,0 (246.1)	85,0 (278.9)	95,0 (311.7)	100,0 (328.0)
24,0 m (78.7 ft.) jib length	Radius												
	19,8 (65)	1400 (3086)						995 (2194)	1117 (2462)				
	24 (80)	1333 (2903)	1204 (2655)	1025 (2261)	822 (1813)			961 (2123)	1083 (2392)	927 (2044)			
	26 (85)	1261 (2788)	1192 (2632)	1025 (2261)	822 (1813)	681 (1502)	617 (1361)	961 (2123)	1083 (2392)	927 (2044)			
	32 (105)	1077 (2374)	1031 (2274)	976 (2152)	822 (1813)	681 (1502)	617 (1361)	847 (1868)	971 (2141)	927 (2044)	746 (1644)	621 (1370)	567 (1250)
	38 (125)	904 (1989)	892 (1962)	857 (1886)	814 (1794)	681 (1502)	617 (1361)	754 (1659)	869 (1913)	867 (1909)	746 (1644)	621 (1370)	567 (1250)
	46 (150)	697 (1550)	688 (1530)	679 (1511)	673 (1498)	661 (1468)	617 (1361)	657 (1456)	696 (1549)	689 (1533)	684 (1522)	621 (1370)	567 (1250)
	58 (190)	477 (1056)	491 (1086)	482 (1066)	475 (1050)	466 (1031)	461 (1020)	490 (1085)	497 (1099)	489 (1081)	482 (1067)	475 (1050)	470 (1039)
	74 (235)	256 (629)	298 (716)	317 (753)	316 (740)	306 (721)	299 (706)	263 (647)	307 (736)	326 (767)	321 (751)	313 (733)	306 (722)
	82 (270)		216 (470)	242 (529)	253 (552)	246 (538)	238 (522)		222 (484)	249 (545)	259 (566)	251 (549)	244 (534)
	96 (315)				150 (331)	157 (347)	155 (342)			130 (287)	154 (341)	162 (357)	159 (352)
	110 (360)						79 (177)					79 (177)	82 (184)
	118 (390)												

		10° Offset					20° Offset				
Boom m (ft)		55,0 (180.4)	65,0 (213.2)	75,0 (246.1)	85,0 (278.9)	90,0 (295.0)	55,0 (180.4)	65,0 (213.2)	75,0 (246.1)	85,0 (278.9)	90,0 (295.0)
42,0 m (137.8 ft.) jib length	Radius										
	19,8 (65)										
	24 (80)	969 (2138)									
	26 (85)	969 (2138)	826 (1822)	700 (1543)							
	32 (105)	969 (2138)	826 (1822)	700 (1543)	571 (1259)	522 (1151)	777 (1714)	700 (1545)	595 (1313)		
	38 (125)	881 (1939)	826 (1822)	700 (1543)	571 (1259)	522 (1151)	696 (1533)	700 (1545)	595 (1313)	483 (1065)	443 (977)
	46 (150)	705 (1569)	696 (1547)	686 (1521)	571 (1259)	522 (1151)	609 (1350)	686 (1519)	595 (1313)	483 (1065)	443 (977)
	58 (190)	509 (1125)	499 (1103)	489 (1082)	484 (1070)	479 (1060)	502 (1110)	510 (1128)	503 (1111)	482 (1065)	443 (977)
	74 (235)	316 (752)	337 (794)	332 (774)	325 (758)	319 (747)	333 (791)	349 (812)	341 (794)	335 (781)	330 (771)
	82 (270)	241 (527)	264 (578)	272 (596)	266 (584)	260 (569)	256 (558)	279 (609)	284 (623)	277 (606)	271 (593)
	96 (315)		159 (351)	175 (386)	181 (400)	178 (393)	133 (294)	170 (375)	186 (410)	191 (422)	186 (410)
	110 (360)			91 (204)	105 (235)	106 (237)			99 (222)	113 (253)	114 (255)
	118 (390)										74 (155)

Long reach boom range diagram

No. 90-91 long reach boom



Long reach boom load charts

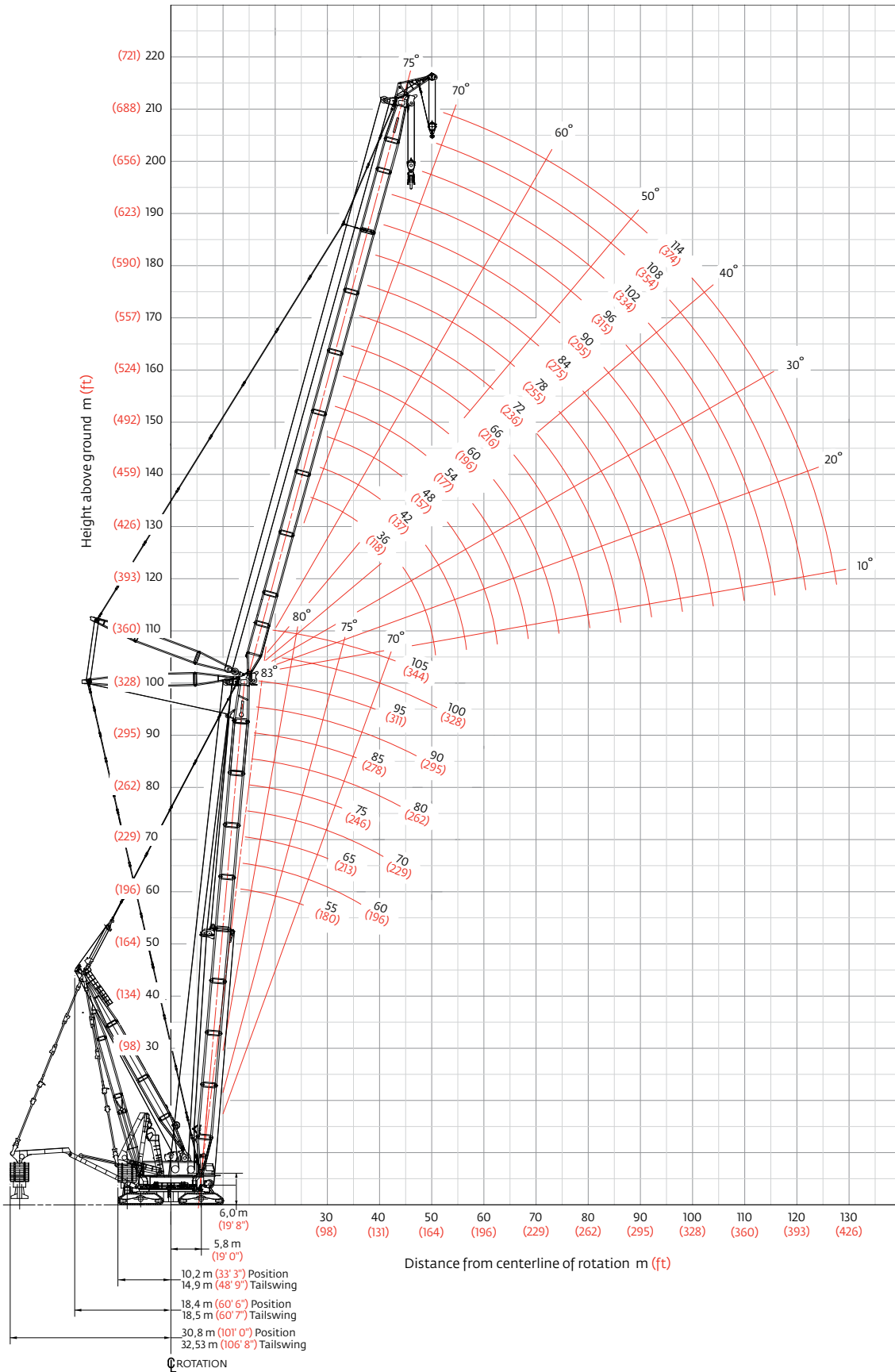
No. 90-91 long reach boom

963, 884 kg (2,125,000 lb) Variable Position Counterweight (VPC)
360° Rating kg (lb) x 1 000

Boom m (ft)	90,0 (295.3)	95,0 (311.7)	100,0 (328.1)	105,0 (344.5)	110,0 (360.9)	115,0 (377.3)	120,0 (393.7)	126,0 (413.4)	132,0 (433.1)	138,0 (452.8)
Radius										
19,8 (65)	1200 (2645)	1101 (2428)	985 (2173)							
22 (75)	1200 (2645)	1101 (2428)	985 (2173)	889 (1961)	801 (1766)	726 (1602)	657 (1448)	586 (1292)		
24 (80)	1200 (2645)	1101 (2428)	985 (2173)	889 (1961)	801 (1766)	726 (1602)	657 (1448)	586 (1292)	525 (1159)	470 (1036)
26 (85)	1197 (2645)	1101 (2428)	985 (2173)	889 (1961)	801 (1766)	726 (1602)	657 (1448)	586 (1292)	525 (1159)	470 (1036)
28 (90)	1145 (2557)	1097 (2428)	985 (2173)	889 (1961)	801 (1766)	726 (1602)	657 (1448)	586 (1292)	525 (1159)	470 (1036)
32 (105)	1035 (2281)	1020 (2249)	985 (2173)	889 (1961)	801 (1766)	726 (1602)	657 (1448)	586 (1292)	525 (1159)	470 (1036)
36 (120)	882 (1905)	880 (1900)	875 (1889)	867 (1884)	801 (1766)	726 (1602)	657 (1448)	586 (1292)	525 (1159)	470 (1036)
40 (130)	766 (1710)	763 (1705)	758 (1694)	756 (1689)	751 (1677)	725 (1602)	657 (1448)	586 (1292)	525 (1159)	450 (997)
44 (145)	673 (1476)	671 (1471)	666 (1460)	663 (1454)	658 (1443)	656 (1437)	647 (1423)	585 (1291)	507 (1115)	426 (937)
48 (155)	598 (1349)	596 (1344)	591 (1332)	589 (1327)	583 (1315)	581 (1310)	574 (1295)	575 (1288)	484 (1076)	404 (900)
52 (170)	537 (1189)	534 (1184)	529 (1172)	526 (1167)	521 (1155)	519 (1150)	512 (1135)	510 (1132)	463 (1022)	384 (849)
56 (185)	484 (1058)	482 (1053)	477 (1041)	474 (1036)	469 (1024)	466 (1019)	460 (1004)	458 (1000)	443 (974)	366 (804)
60 (195)	440 (983)	438 (978)	432 (966)	430 (961)	424 (949)	422 (944)	415 (929)	414 (926)	414 (926)	350 (776)
64 (210)	401 (886)	399 (880)	394 (868)	391 (863)	386 (851)	383 (846)	377 (831)	376 (828)	376 (828)	335 (738)
68 (225)	368 (802)	366 (797)	360 (785)	358 (779)	352 (767)	350 (762)	343 (747)	342 (745)	342 (745)	321 (704)
72 (240)	338 (729)	336 (724)	331 (712)	328 (707)	323 (695)	320 (689)	314 (674)	312 (672)	312 (672)	308 (667)
76 (250)	312 (686)	310 (681)	304 (669)	302 (664)	296 (651)	294 (646)	287 (631)	286 (629)	286 (629)	284 (624)
80 (270)	289 (610)	286 (605)	281 (593)	279 (588)	273 (575)	271 (570)	264 (555)	263 (553)	263 (553)	261 (548)
84 (280)		265 (571)	260 (559)	258 (554)	252 (542)	250 (536)	243 (521)	242 (519)	242 (519)	240 (514)
88 (290)		246 (540)	241 (528)	238 (523)	233 (510)	231 (505)	233 (490)	223 (486)	223 (488)	221 (483)
92 (300)			223 (498)	221 (493)	216 (481)	213 (476)	207 (461)	205 (457)	205 (459)	203 (454)
96 (320)				205 (441)	200 (428)	197 (423)	191 (408)	189 (406)	190 (406)	188 (402)
100 (330)					185 (405)	183 (399)	176 (385)	175 (381)	175 (382)	173 (378)
108 (350)							- (341)	150 (339)	150 (339)	147 (335)
116 (380)									128 (283)	126 (278)
124 (410)										104 (222)

Luffing jib range diagram

No. 91 luffing jib on No. 90 main boom



Luffing jib load charts

No. 91 Luffing jib on No. 90 main boom

963 884 kg (2,125,000 lb) Variable Position Counterweight (VPC)
360° Rating kg (lb) x1 000

85° Boom angle

Boom m (ft) Radius	36,0 (118.0)				60,0 (197.0)				84,0 (276.0)				114,0 (374.0)						
	23,86 (75)	1100 (2425)				24,38 (80)	929 (2048)				24,38 (80)	834 (1839)				24,38 (80)	834 (1839)		
30,0 (100)	1051 (2265)	684 (1509)			30,0 (100)	929 (2048)	- (1338)			30,0 (100)	829 (1822)	- (1155)			30,0 (100)	829 (1822)	- (1155)		
40,0 (130)	660 (1478)	653 (1451)	384 (848)		40,0 (130)	684 (1533)	567 (1260)	350 (771)		40,0 (130)	613 (1368)	494 (1098)	314 (692)		40,0 (130)	613 (1368)	494 (1098)	314 (692)	
48,0 (160)		537 (1155)	384 (848)	194 (429)	48,0 (160)		471 (1020)	350 (771)	180 (398)	48,0 (160)	410 (810)	413 (893)	314 (692)	167 (367)	48,0 (160)	410 (810)	413 (893)	314 (692)	167 (367)
58,0 (190)		400 (885)	355 (785)	192 (425)	58,0 (190)		363 (802)	312 (688)	179 (396)	58,0 (190)		320 (708)	274 (606)	165 (365)	58,0 (190)		320 (708)	274 (606)	165 (365)
68,0 (220)		288 (667)	298 (670)	189 (419)	68,0 (220)		285 (642)	259 (582)	177 (391)	68,0 (220)		253 (569)	227 (511)	163 (361)	68,0 (220)		253 (569)	227 (511)	163 (361)
76,0 (250)			255 (562)	186 (411)	76,0 (250)			221 (486)	168 (371)	76,0 (250)			193 (425)	148 (327)	76,0 (250)			193 (425)	148 (327)
86,0 (280)			197 (446)	170 (379)	86,0 (280)			182 (408)	149 (331)	86,0 (280)			160 (357)	130 (289)	86,0 (280)			160 (357)	130 (289)
94,0 (310)			130 (274)	154 (339)	94,0 (310)			139 (295)	133 (292)	94,0 (310)			142 (312)	115 (253)	94,0 (310)			142 (312)	115 (253)
106,0 (350)				116 (253)	106,0 (350)				112 (246)	106,0 (350)				96 (210)	106,0 (350)				96 (210)
122,0 (405)				55 (103)	122,0 (405)				59 (113)	122,0 (405)				53 (105)	122,0 (405)				53 (105)

Boom m (ft) Radius	36,0 (118.0)				60,0 (197.0)				84,0 (276.0)				114,0 (374.0)						
	25,91 (85)	735 (1620)				25,91 (85)	600 (1322)				25,91 (85)	510 (1125)				25,91 (85)	510 (1125)		
34,0 (110)	646 (1443)	454,0 (1002)			34,0 (110)	561 (1251)	390 (861)			34,0 (110)	493 (1087)				34,0 (110)	493 (1087)			
42,0 (140)	507 (1097)	414 (902)	281 (621)		42,0 (140)	449 (972)	363 (790)	249 (549)		42,0 (140)	440 (968)	329 (726)			42,0 (140)	440 (968)	329 (726)		
52,0 (170)		329 (730)	266 (588)	152 (336)	52,0 (170)		292 (647)	233 (517)	137 (302)	52,0 (170)		376 (825)	304 (669)		52,0 (170)		376 (825)	304 (669)	
60,0 (200)		270 (583)	233 (504)	150 (332)	60,0 (200)		241 (520)	204 (443)	135 (298)	60,0 (200)		327 (719)	269 (589)		60,0 (200)		327 (719)	269 (589)	
70,0 (230)		217 (479)	192 (422)	140 (309)	70,0 (230)		195 (429)	168 (371)	122 (269)	70,0 (230)			235 (513)		70,0 (230)			235 (513)	
80,0 (260)			157 (352)	123 (274)	80,0 (260)			138 (309)	106 (237)	80,0 (260)			204 (446)		80,0 (260)			204 (446)	
88,0 (290)			136 (297)	109 (239)	88,0 (290)			119 (262)	93 (205)	88,0 (290)			180 (393)		88,0 (290)			180 (393)	
98,0 (320)			- (263)	93 (207)	98,0 (320)			- (236)	79 (176)	98,0 (320)			165 (362)		98,0 (320)			165 (362)	
110,0 (360)				77 (170)	110,0 (360)				64 (143)	110,0 (360)					110,0 (360)				64 (143)
126,0 (415)				48 (100)	126,0 (415)				51 (107)	126,0 (415)					126,0 (415)				51 (107)

Boom m (ft) Radius	36,0 (118.0)				60,0 (197.0)				84,0 (276.0)				114,0 (374.0)						
	25,91 (85)	600 (1322)				25,91 (85)	600 (1322)				25,91 (85)	510 (1125)				25,91 (85)	510 (1125)		
34,0 (110)	561 (1251)	390 (861)			34,0 (110)	561 (1251)	390 (861)			34,0 (110)	493 (1087)				34,0 (110)	493 (1087)			
42,0 (140)	449 (972)	363 (790)	249 (549)		42,0 (140)	449 (972)	363 (790)	249 (549)		42,0 (140)	440 (968)	329 (726)			42,0 (140)	440 (968)	329 (726)		
52,0 (170)		292 (647)	233 (517)	137 (302)	52,0 (170)		292 (647)	233 (517)	137 (302)	52,0 (170)		376 (825)	304 (669)		52,0 (170)		376 (825)	304 (669)	
60,0 (200)		241 (520)	204 (443)	135 (298)	60,0 (200)		241 (520)	204 (443)	135 (298)	60,0 (200)		327 (719)	269 (589)		60,0 (200)		327 (719)	269 (589)	
70,0 (230)		195 (429)	168 (371)	122 (269)	70,0 (230)		195 (429)	168 (371)	122 (269)	70,0 (230)			235 (513)		70,0 (230)			235 (513)	
80,0 (260)			138 (309)	106 (237)	80,0 (260)			138 (309)	106 (237)	80,0 (260)			204 (446)		80,0 (260)			204 (446)	
88,0 (290)			119 (262)	93 (205)	88,0 (290)			119 (262)	93 (205)	88,0 (290)			180 (393)		88,0 (290)			180 (393)	
98,0 (320)			- (236)	79 (176)	98,0 (320)			- (236)	79 (176)	98,0 (320)			165 (362)		98,0 (320)			165 (362)	
110,0 (360)				64 (143)	110,0 (360)				64 (143)	110,0 (360)					110,0 (360)				64 (143)
126,0 (415)				51 (107)	126,0 (415)				51 (107)	126,0 (415)					126,0 (415)				51 (107)

Boom m (ft) Radius	36,0 (118.0)				60,0 (197.0)				84,0 (276.0)				114,0 (374.0)						
	27,43 (90)	510 (1125)				27,43 (90)	510 (1125)				27,43 (90)	510 (1125)				27,43 (90)	510 (1125)		
32,0 (105)	493 (1087)				32,0 (105)	493 (1087)				32,0 (105)	493 (1087)				32,0 (105)	493 (1087)			
38,0 (125)	440 (968)	329 (726)			38,0 (125)	440 (968)	329 (726)			38,0 (125)	440 (968)	329 (726)			38,0 (125)	440 (968)	329 (726)		
44,0 (145)	376 (825)	304 (669)			44,0 (145)	376 (825)	304 (669)			44,0 (145)	376 (825)	304 (669)			44,0 (145)	376 (825)	304 (669)		
50,0 (165)	327 (719)	269 (589)			50,0 (165)	327 (719)	269 (589)			50,0 (165)	327 (719)	269 (589)			50,0 (165)	327 (719)	269 (589)		
56,0 (185)		235 (513)			56,0 (185)		235 (513)			56,0 (185)		235 (513)			56,0 (185)		235 (513)		
62,0 (205)		204 (446)			62,0 (205)		204 (446)			62,0 (205)		204 (446)			62,0 (205)		204 (446)		
68,0 (225)		180 (393)			68,0 (225)		180 (393)			68,0 (225)		180 (393)			68,0 (225)		180 (393)		
74,0 (245)		165 (362)			74,0 (245)		165 (362)			74,0 (245)		165 (362)			74,0 (245)		165 (362)		

Luffing jib load charts

No. 91 Luffing jib on No. 90 main boom

963 884 kg (2,125,000 lb) Variable Position Counterweight (VPC)
360° Rating kg (lb) x1 000

80° Boom angle

Boom m (ft) Radius	360,0 (118.0)				60,0 (197.0)				84,0 (276.0)				114,0 (374.0)			
32,0 (100)	1032 (2345)				932 (2056)				871 (1917)				839 (1849)			
36,0 (120)	955 (2085)				871 (1917)				839 (1849)				769 (1679)			
46,0 (150)	635 (1416)				682 (1523)				589 (1299)				559 (1248)			
54,0 (180)	522 (1121)				552 (1185)				334 (737)				451 (973)			
64,0 (210)	391 (863)				411 (906)				334 (737)				355 (781)			
74,0 (240)	282 (654)				311 (712)				322 (719)				266 (595)			
82,0 (270)	253 (554)				271 (595)				171 (377)				229 (502)			
92,0 (300)	197 (442)				211 (474)				171 (377)				178 (402)			
100,0 (330)	155 (338)				146 (308)				167 (364)				144 (315)			
112,0 (370)	114 (247)				116 (257)				115 (246)				115 (246)			
128,0 (420)	56 (123)				53 (102)				52 (106)				52 (106)			

Boom m (ft) Radius	36,0 (118.0)				60,0 (197.0)				84,0 (276.0)				114,0 (374.0)			
38,0 (120)	736 (1624)				607 (1339)				598 (1317)				510 (1131)			
42,0 (140)	719 (1571)				598 (1317)				497 (1096)				497 (1096)			
52,0 (170)	555 (1229)				472 (1058)				386 (852)				482 (1048)			
60,0 (200)	400 (866)				342 (747)				244 (539)				329 (725)			
70,0 (230)	320 (703)				276 (613)				238 (528)				130 (286)			
80,0 (260)	258 (579)				234 (510)				210 (457)				130 (286)			
88,0 (290)	204 (448)				175 (388)				130 (286)				130 (286)			
98,0 (320)	170 (379)				147 (330)				119 (266)				119 (266)			
106,0 (345)	127 (283)				133 (280)				110 (241)				110 (241)			
118,0 (390)	107 (234)				93 (203)				93 (203)				93 (203)			
134,0 (440)	52 (113)				60 (112)				60 (112)				60 (112)			

Boom m (ft) Radius	36,0 (118.0)		60,0 (197.0)	
40,0 (130)	510 (1131)		482 (1048)	
44,0 (145)	497 (1096)		482 (1048)	
48,0 (160)	482 (1048)		329 (725)	
54,0 (175)	420 (942)		329 (725)	
60,0 (195)	313 (697)		313 (697)	
66,0 (215)	279 (622)		279 (622)	
72,0 (235)	247 (549)		247 (549)	
78,0 (255)	218 (484)		218 (484)	
82,0 (275)	203 (439)		203 (439)	

Boom m (ft) Radius	36,0 (118.0)		60,0 (197.0)	
40,0 (130)	510 (1131)		482 (1048)	
44,0 (145)	497 (1096)		482 (1048)	
48,0 (160)	482 (1048)		329 (725)	
54,0 (175)	420 (942)		329 (725)	
60,0 (195)	313 (697)		313 (697)	
66,0 (215)	279 (622)		279 (622)	
72,0 (235)	247 (549)		247 (549)	
78,0 (255)	218 (484)		218 (484)	
82,0 (275)	203 (439)		203 (439)	

Luffing jib load charts

No. 91 luffing jib on No. 90 main boom

963 884 kg (2,125,000 lb) Variable Position Counterweight (VPC)
360° Rating kg (lb) x 1 000

70° Boom angle

Boom m (ft) Radius	36,0 (118.0) 60,0 (197.0) 84,0 (276.0) 114,0 (374.0)				Boom m (ft) Radius	36,0 (118.0) 60,0 (197.0) 84,0 (276.0) 114,0 (374.0)				Boom m (ft) Radius	36,0 (118.0) 60,0 (197.0) 84,0 (276.0) 114,0 (374.0)			
	36,0 (118.0)	60,0 (197.0)	84,0 (276.0)	114,0 (374.0)		36,0 (118.0)	60,0 (197.0)	84,0 (276.0)	114,0 (374.0)		36,0 (118.0)	60,0 (197.0)	84,0 (276.0)	114,0 (374.0)
55,0 m (180.0 ft) Luffing jib length	46,0 (150)	52,0 (170)	58,0 (190)	68,0 (220)	65,0 m (213.0 ft) Luffing jib length	50,0 (160)	54,0 (180)	64,0 (210)	74,0 (240)	75,0 m (246.0 ft) Luffing jib length	54,0 (175)	60,0 (195)	68,0 (220)	74,0 (245)
	706 (1568)	606 (1343)	528 (1167)	421 (946)		621 (1411)	564 (1219)	453 (998)	366 (820)		548 (1226)	479 (1070)	- (913)	353 (770)
		363 (798)	310 (684)	293 (655)			318 (698)	442 (975)	283 (624)			395 (887)	307 (675)	257 (566)
		- (588)	240 (523)	153 (339)			318 (698)	258 (575)	283 (624)			257 (566)	247 (551)	129 (284)
			188 (418)	153 (339)			228 (498)	141 (311)	141 (311)			216 (472)	195 (426)	129 (284)
				140 (308)			175 (392)	141 (311)	141 (311)			129 (284)	129 (284)	129 (284)
				103 (234)			141 (311)	109 (245)	109 (245)			104 (235)	104 (235)	104 (235)
				66 (136)			74 (164)	74 (164)	74 (164)			55 (116)	55 (116)	55 (116)

Boom m (ft) Radius	36,0 (118.0) 60,0 (197.0) 84,0 (276.0) 114,0 (374.0)			
	36,0 (118.0)	60,0 (197.0)	84,0 (276.0)	114,0 (374.0)
85,0 m (279.0 ft) Luffing jib length	58,0 (185)	64,0 (210)	72,0 (235)	80,0 (260)
	484 (1106)	427 (941)	- (806)	305 (683)
		352 (782)	305 (683)	276 (601)
			241 (527)	236 (520)
				225 (492)
				196 (431)
				116 (257)
				170 (378)
				116 (257)
				147 (319)
				116 (257)
				89 (197)
				64 (130)

Boom m (ft) Radius	36,0 (118.0) 60,0 (197.0) 84,0 (276.0) 114,0 (374.0)			
	36,0 (118.0)	60,0 (197.0)	84,0 (276.0)	114,0 (374.0)
95,0 m (312.0 ft) Luffing jib length	60,0 (195)	64,0 (210)	68,0 (225)	74,0 (245)
	446 (996)	411 (906)	379 (828)	338 (735)
			324 (707)	279 (612)
			241 (532)	211 (45)
			- (447)	183 (412)
				106 (235)
				153 (340)
				106 (235)
				- (269)
				98 (217)
				71 (158)
				48 (103)

Boom m (ft) Radius	36,0 (118.0) 60,0 (197.0)	
	36,0 (118.0)	60,0 (197.0)
105,0 m (344.0 ft) Luffing jib length	64,0 (205)	68,0 (220)
	388 (886)	356 (802)
	328 (729)	- (641)
		274 (609)
		244 (541)
		219 (483)
		196 (432)
		174 (383)