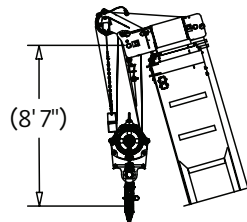
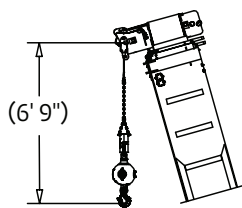
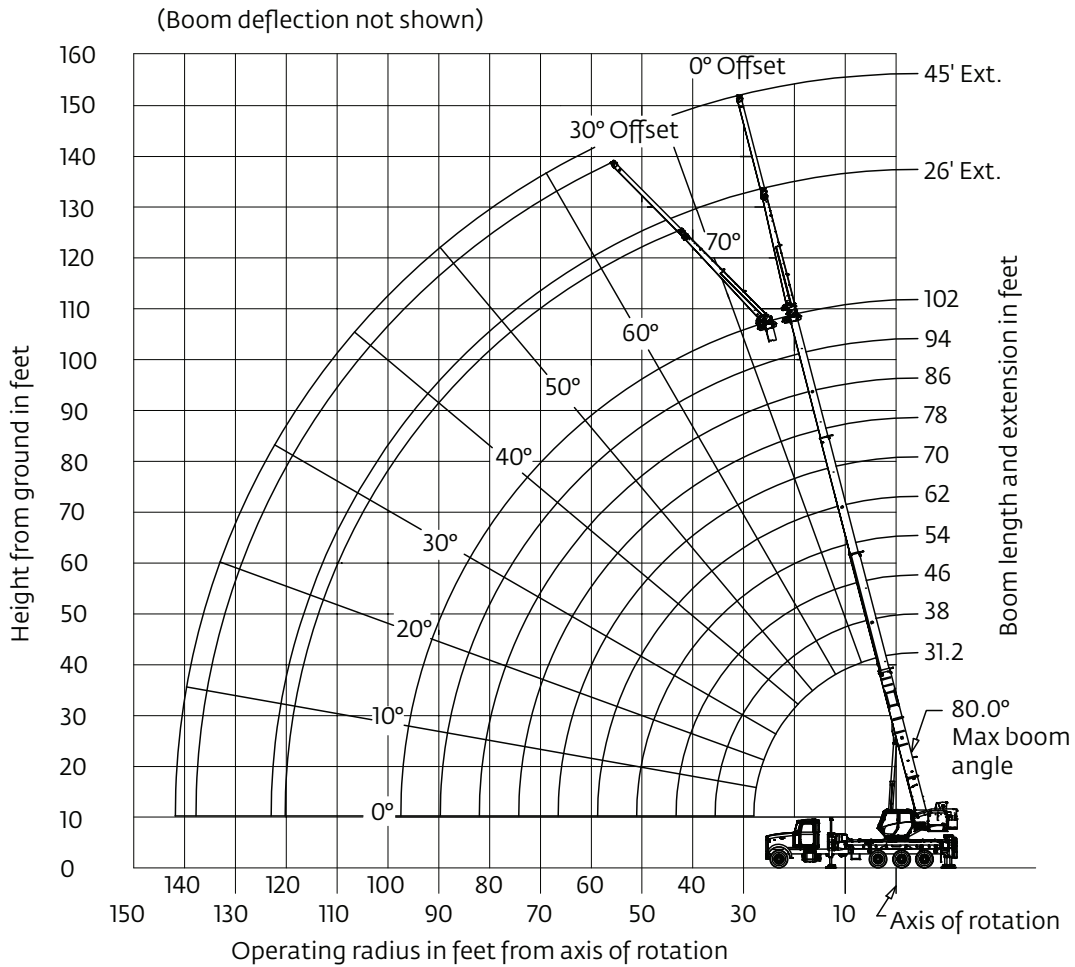


Working range

NBT50/NBT55: 102 ft main boom, full span outriggers, with extensions



Dimensions are for largest furnished hook block and headache ball with anti-two block activated.

*This drawing shows the physical reach of the machine. Always refer to the load chart to see which portions of this diagram are valid for the specific machine configuration and where the loads are structurally or stability limited.

*THIS CHART IS ONLY A GUIDE AND SHOULD NOT BE USED TO OPERATE THE CRANE.
The individual crane's load chart, operating instructions and other instructional plates must be read and understood prior to operating the crane.*

Load chart

NBT55



31,1 m
(102 ft)



2722 kg
(6000 lb)



100%



360°

Radius in Feet	#001									
	Main Boom Length in Feet									
	31.2	38-A	46-B	54-C	62-D	70-E	78-F	86-G	94-H	102
8	110,000 (68.3)									
10	93,350 (64.2)	51,200 (69.2)	50,350 (73.1)	50,200 (75.9)	50,000 (78.0)	41,000 (79.6)				
12	82,350 (59.9)	51,200 (65.8)	50,350 (70.4)	50,200 (73.9)	50,000 (76.1)	41,000 (77.9)	34,350 (79.4)			
15	66,350 (53.0)	51,200 (60.7)	50,350 (66.4)	50,200 (70.5)	50,000 (73.5)	41,000 (75.5)	34,350 (77.3)	26,800 (78.7)		
20	48,750 (39.8)	49,150 (51.3)	49,450 (59.3)	49,650 (64.6)	46,450 (68.5)	41,000 (71.3)	34,350 (73.7)	26,800 (75.5)	23,000 (77.1)	18,000 (82.2)
25	31,500 (20.0)	38,350 (40.3)	38,650 (51.4)	38,850 (58.3)	39,000 (63.2)	35,950 (66.9)	30,150 (69.7)	26,800 (72.2)	23,000 (74.2)	18,000 (75.6)
30		29,000 (25.7)	31,100 (42.6)	31,300 (51.6)	31,500 (57.7)	31,400 (62.2)	26,750 (65.7)	23,800 (68.6)	21,250 (71.0)	18,000 (72.9)
35			25,550 (31.9)	25,750 (44.2)	25,950 (51.9)	26,050 (57.3)	23,700 (61.5)	21,250 (64.9)	18,950 (67.7)	17,000 (69.9)
40			16,000 (15.1)	20,800 (35.7)	21,000 (45.6)	21,150 (52.1)	21,150 (57.1)	19,100 (61.1)	17,100 (64.3)	15,350 (66.9)
45				16,800 (24.4)	17,000 (38.4)	17,200 (46.4)	17,300 (52.4)	17,050 (57.1)	15,550 (60.8)	13,950 (63.7)
50					14,100 (29.6)	14,250 (40.2)	14,350 (47.3)	14,450 (52.8)	14,200 (57.1)	12,700 (60.5)
55					*11,150 (18.6)	11,950 (33.0)	12,100 (41.8)	12,200 (48.2)	12,250 (53.1)	11,650 (57.1)
60						10,250 (24.9)	10,400 (36.3)	10,500 (43.7)	10,550 (49.3)	10,650 (53.8)
65						*6,400 (9.8)	8,900 (29.0)	9,000 (38.3)	9,100 (44.9)	9,150 (50.0)
70							7,650 (19.4)	7,800 (32.2)	7,850 (40.1)	7,950 (45.9)
75								6,750 (24.7)	6,850 (34.7)	6,900 (41.6)
80								*5,200 (13.2)	5,950 (28.4)	6,000 (36.7)
85									5,150 (20.3)	5,250 (31.3)
90										4,550 (24.7)
95										4,000 (15.5)
97										*2,200 (8.7)
Minimum boom angle (°) for indicated length (no load)										0
Maximum boom length (ft.) at 0° boom angle (no load)										102

NOTE: () Boom angles are in degrees.

*Loads are structurally limited.

#RCL operating code. Refer to RCL manual for operating instructions.

Lifting Capacities at Zero Degree Boom Angle										
Boom Angle	Main Boom Length in Feet									
	31.2	38-A	46-B	54-C	62-D	70-E	78-F	86-G	94-H	
0°	12,450 (27)	9,250 (33.8)	6,750 (41.8)	5,000 (49.8)	3,700 (57.8)	2,700 (65.8)	1,950 (73.8)	1,300 (81.8)	700 (89.8)	

NOTE: () Reference radii in feet.

80108239

THIS CHART IS ONLY A GUIDE AND SHOULD NOT BE USED TO OPERATE THE CRANE.
The individual crane's load chart, operating instructions and other instructional plates must be read and understood prior to operating the crane.

Load chart

NBT55



31,1 m
(102 ft)



2722 kg
(6000 lb)



100%



Over Rear

Radius in Feet	#003									
	Main Boom Length in Feet									
	31.2	38-A	46-B	54-C	62-D	70-E	78-F	86-G	94-H	102
8	110,000 (68.3)									
10	93,350 (64.2)	51,200 (69.2)	50,350 (73.1)	50,200 (75.9)	50,000 (78.0)	41,000 (79.6)				
12	82,350 (59.9)	51,200 (65.8)	50,350 (70.4)	50,200 (73.9)	50,000 (76.1)	41,000 (77.9)	34,350 (79.6)			
15	66,350 (53.0)	51,200 (60.7)	50,350 (66.4)	50,200 (70.5)	50,000 (73.5)	41,000 (75.5)	34,350 (77.3)	26,800 (78.7)		
20	48,750 (39.8)	49,150 (51.3)	49,450 (59.3)	49,650 (64.6)	46,450 (68.4)	41,000 (71.3)	34,350 (73.7)	26,800 (75.5)	23,000 (77.1)	18,000 (78.2)
25	31,500 (20.0)	38,350 (40.3)	38,650 (51.4)	38,850 (58.3)	39,000 (63.2)	35,950 (66.9)	30,150 (69.7)	26,800 (72.2)	23,000 (74.2)	18,000 (75.6)
30		29,000 (25.7)	31,100 (42.6)	31,300 (51.6)	31,500 (57.7)	31,400 (62.2)	26,750 (65.7)	23,800 (68.6)	21,250 (71.0)	18,000 (72.9)
35			25,550 (31.9)	25,750 (44.2)	25,950 (51.9)	26,050 (57.3)	23,700 (61.5)	21,250 (64.9)	18,950 (67.7)	17,000 (69.9)
40			16,000 (15.1)	21,650 (35.6)	21,850 (45.5)	21,950 (52.1)	21,150 (57.1)	19,100 (61.1)	17,100 (64.3)	15,350 (66.9)
45				17,300 (24.4)	18,550 (38.3)	18,650 (46.4)	18,800 (52.5)	17,050 (57.1)	15,550 (60.8)	13,950 (63.7)
50					15,500 (29.6)	15,650 (40.2)	15,750 (47.4)	15,300 (52.9)	14,200 (57.1)	12,700 (60.5)
55					*11,150 (18.6)	13,300 (33.0)	13,400 (41.9)	13,500 (48.3)	13,000 (53.2)	11,650 (57.1)
60						11,450 (24.9)	11,550 (35.7)	11,650 (43.4)	11,700 (49.1)	10,750 (53.8)
65						*6,400 (9.8)	10,100 (29.1)	10,200 (38.5)	10,300 (45.1)	9,800 (50.1)
70							*8,350 (19.5)	8,900 (32.3)	9,000 (40.3)	9,050 (46.1)
75								7,800 (24.8)	7,900 (34.9)	7,950 (41.8)
80								*5,200 (13.2)	6,950 (28.6)	7,000 (37.0)
85									*6,100 (20.4)	6,200 (31.5)
90										5,500 (24.9)
95										*4,050 (15.5)
97										*2,200 (8.7)
Minimum boom angle (°) for indicated length (no load)										0
Maximum boom length (ft.) at 0° boom angle (no load)										102

NOTE: () Boom angles are in degrees.

*Loads are structurally limited.

#RCL operating code. Refer to RCL manual for operating instructions.

Lifting Capacities at Zero Degree Boom Angle										
Boom Angle	Main Boom Length in Feet									
	31.2	38-A	46-B	54-C	62-D	70-E	78-F	86-G	94-H	
0°	12,450 (27)	9,250 (33.8)	6,750 (41.8)	5,000 (49.8)	3,700 (57.8)	2,700 (65.8)	1,950 (73.8)	1,300 (81.8)	700 (89.8)	

NOTE: () Reference radii in feet.

80108243

THIS CHART IS ONLY A GUIDE AND SHOULD NOT BE USED TO OPERATE THE CRANE.
The individual crane's load chart, operating instructions and other instructional plates must be read and understood prior to operating the crane.

Load chart

NBT55



7,9 m - 13,7 m
(26 ft - 45 ft)



2722 kg
(6000 lb)



100%



360°

Radius in Feet	**26 ft. LENGTH		45 ft. LENGTH	
	#0005	#0007	#0009	#0011
	0° OFFSET	30° OFFSET	0° OFFSET	30° OFFSET
25	8,100 (77.9)			
30	8,100 (75.8)		5,450 (77.9)	
35	8,100 (73.8)	5,700 (79.5)	5,450 (76.2)	
40	8,100 (71.6)	5,700 (77.2)	5,450 (74.4)	
45	8,100 (69.5)	5,700 (75.1)	5,450 (72.6)	
50	8,050 (67.2)	5,700 (72.7)	5,450 (70.7)	3,150 (78.8)
55	7,450 (64.7)	5,700 (70.2)	5,450 (68.9)	3,150 (76.8)
60	7,000 (62.3)	5,550 (67.7)	5,350 (66.8)	3,150 (74.8)
65	6,500 (59.7)	5,350 (65.0)	5,000 (64.7)	3,150 (72.6)
70	6,000 (57.0)	5,200 (62.3)	4,700 (62.6)	3,150 (70.3)
75	5,650 (54.3)	5,050 (59.4)	4,400 (60.3)	3,050 (68.0)
80	5,300 (51.4)	4,800 (56.4)	4,200 (58.1)	2,950 (65.5)
85	5,000 (48.4)	4,550 (53.2)	3,950 (55.7)	2,850 (63.0)
90	4,450 (45.1)	4,350 (49.8)	3,750 (53.2)	2,800 (60.4)
95	3,900 (41.6)	4,150 (46.2)	3,550 (50.7)	2,750 (57.7)
100	3,350 (37.8)	3,650 (42.1)	3,400 (48.0)	2,700 (54.9)
105	2,900 (33.6)	3,100 (37.5)	3,250 (45.3)	2,650 (51.9)
110	2,450 (28.9)	2,600 (32.3)	3,100 (42.3)	2,600 (48.6)
115	2,050 (23.3)		2,850 (39.0)	2,550 (45.1)
120	*1,600 (15.7)		2,500 (35.4)	2,500 (41.2)
125			2,150 (31.4)	2,400 (36.7)
130			1,850 (26.8)	2,000 (31.1)
135			1,600 (21.3)	
140			*900 (13.2)	
Min. boom angle for indicated length (no load)	10°	30°	10°	30°
Max. boom length at 0° boom angle (no load)	70 ft.		70 ft.	

NOTE: () Boom angles are in degrees. 80108245

#RCL operating code. Refer to RCL manual for instructions.

*Loads are structurally limited.

**26 ft. capacities are applicable to both 26' fixed and 26' tele extension.

Boom extension capacity notes:

1. All capacities above the bold line are based on structural strength limitations.
2. 26 ft and 45 ft extension lengths may be used for single line lifting service.
3. Radii listed are for a fully extended boom with the boom extension erected. For main boom lengths less than fully extended, the rated loads are determined by boom angle. Use only the column which corresponds to the boom extension length and offset for which the machine is configured. For boom angles not shown, use the rating of the next lower boom angle.

Warning: Operation of this machine with heavier loads than the capacities listed is strictly prohibited. Machine tipping with boom extension occurs rapidly and without advance warning.

4. Boom angle is the angle above or below horizontal of the longitudinal axis of the boom base section after lifting rated load.
5. Capacities listed are with outriggers properly extended and vertical jacks set only.

THIS CHART IS ONLY A GUIDE AND SHOULD NOT BE USED TO OPERATE THE CRANE.

The individual crane's load chart, operating instructions and other instructional plates must be read and understood prior to operating the crane.

Load chart

NBT55



7,9 m - 13,7 m
(26 ft - 45 ft)



2722 kg
(6000 lb)



100%



Over Rear

Radius in Feet	**26 ft. LENGTH		45 ft. LENGTH	
	#0006	#0008	#0010	#0012
	0° OFFSET	30° OFFSET	0° OFFSET	30° OFFSET
25	8,100 (77.9)			
30	8,100 (75.8)		5,450 (77.9)	
35	8,100 (73.8)	5,700 (79.5)	5,450 (76.2)	
40	8,100 (71.6)	5,700 (77.2)	5,450 (74.4)	
45	8,100 (69.5)	5,700 (75.1)	5,450 (72.6)	
50	8,050 (67.2)	5,700 (72.7)	5,450 (70.7)	3,150 (78.8)
55	7,450 (64.7)	5,700 (70.2)	5,450 (68.9)	3,150 (76.8)
60	7,000 (62.3)	5,550 (67.7)	5,350 (66.8)	3,150 (74.8)
65	6,500 (59.7)	5,350 (65.0)	5,000 (64.7)	3,150 (72.6)
70	6,000 (57.0)	5,200 (62.3)	4,700 (62.6)	3,150 (70.3)
75	5,650 (54.3)	5,050 (59.4)	4,400 (60.3)	3,050 (68.0)
80	5,300 (51.4)	4,800 (56.4)	4,200 (58.1)	2,950 (65.5)
85	5,000 (48.4)	4,550 (53.2)	3,950 (55.7)	2,850 (63.0)
90	4,450 (45.1)	4,350 (49.8)	3,750 (53.2)	2,800 (60.4)
95	3,900 (41.6)	4,150 (46.2)	3,550 (50.7)	2,750 (57.7)
100	3,450 (37.8)	3,750 (42.2)	3,400 (48.0)	2,700 (54.9)
105	3,050 (33.7)	3,250 (37.6)	3,250 (45.3)	2,650 (51.9)
110	2,650 (29.0)	2,850 (32.4)	3,100 (42.3)	2,600 (48.6)
115	2,300 (23.4)		2,900 (39.1)	2,550 (45.1)
120	1,600 (15.7)		2,550 (35.4)	2,500 (41.2)
125			2,300 (31.5)	2,450 (36.7)
130			2,000 (26.9)	2,300 (31.2)
135			1,750 (21.5)	
140			900 (13.2)	
Min. boom angle for indicated length (no load)	10°	30°	10°	30°
Max. boom length at 0° boom angle (no load)	70 ft.		70 ft.	

NOTE: () Boom angles are in degrees. 80108246

#RCL operating code. Refer to RCL manual for instructions.

**26 ft. capacities are applicable to both 26' fixed and 26' tele extension.

Boom extension capacity notes:

1. All capacities above the bold line are based on structural strength limitations.
 2. 26 ft and 45 ft extension lengths may be used for single line lifting service.
 3. Radii listed are for a fully extended boom with the boom extension erected. For main boom lengths less than fully extended, the rated loads are determined by boom angle. Use only the column which corresponds to the boom extension length and offset for which the machine is configured. For boom angles not shown, use the rating of the next lower boom angle.
- Warning:** Operation of this machine with heavier loads than the capacities listed is strictly prohibited. Machine tipping with boom extension occurs rapidly and without advance warning.
4. Boom angle is the angle above or below horizontal of the longitudinal axis of the boom base section after lifting rated load.
 5. Capacities listed are with outriggers properly extended and vertical jacks set only.

THIS CHART IS ONLY A GUIDE AND SHOULD NOT BE USED TO OPERATE THE CRANE.

The individual crane's load chart, operating instructions and other instructional plates must be read and understood prior to operating the crane.

Load chart

NBT50/NBT55



31,1 m
(102 ft)



1361 kg
(3000 lb)



100%



360°

Radius in Feet	#0001									
	Main Boom Length in Feet									
	31.2	38-A	46-B	54-C	62-D	70-E	78-F	86-G	94-H	102
8	100,000 (68.3)									
10	93,350 (64.2)	51,200 (69.2)	50,350 (73.1)	50,200 (75.9)	50,000 (78.0)	41,000 (79.6)				
12	80,950 (59.9)	51,200 (65.8)	50,350 (70.4)	50,200 (73.7)	50,000 (76.1)	41,000 (77.9)	34,350 (79.4)			
15	64,400 (53)	51,200 (60.7)	50,350 (66.4)	50,200 (70.3)	50,000 (73.3)	41,000 (75.5)	34,350 (77.3)	26,800 (78.7)		
20	47,300 (39.8)	47,650 (51.3)	47,950 (59.3)	48,150 (64.5)	46,450 (68.4)	41,000 (71.3)	34,350 (73.7)	26,800 (75.5)	23,000 (77.1)	18,000 (78.2)
25	31,500 (20)	37,050 (40.3)	37,400 (51.4)	37,600 (58.3)	37,800 (63.2)	35,950 (66.9)	30,150 (69.7)	26,800 (72.2)	23,000 (74.2)	18,000 (75.6)
30		29,000 (25.7)	29,850 (42.6)	30,050 (51.6)	30,250 (57.7)	30,350 (62.2)	26,750 (65.7)	23,800 (68.6)	21,250 (71)	18,000 (72.9)
35			23,600 (31.9)	23,900 (44.2)	24,100 (51.8)	24,250 (57.3)	23,700 (61.5)	21,250 (64.9)	18,950 (67.7)	17,000 (69.9)
40			*16,000 (15.1)	18,700 (35.6)	18,900 (45.4)	19,050 (52)	19,200 (57)	19,100 (61.1)	17,100 (64.3)	15,350 (66.9)
45				15,050 (24.4)	15,250 (38.2)	15,400 (46.4)	15,500 (52.3)	15,650 (57)	15,550 (60.8)	13,950 (63.7)
50					12,550 (29.5)	12,700 (40.1)	12,800 (47.2)	12,900 (52.6)	13,000 (56.9)	12,700 (60.5)
55					10,550 (18.5)	10,700 (33.7)	10,800 (42.3)	10,900 (48.5)	11,000 (53.3)	11,100 (57.3)
60						9,050 (24.8)	9,150 (36.2)	9,250 (43.6)	9,350 (49.2)	9,400 (53.6)
65						*6,400 (9.8)	7,800 (29)	7,900 (38.2)	8,000 (44.7)	8,050 (49.8)
70							6,650 (19.3)	6,750 (32.1)	6,850 (39.9)	6,900 (45.7)
75								5,800 (24.6)	5,900 (34.5)	5,950 (41.4)
80								5,000 (13.2)	5,100 (28.3)	5,150 (36.6)
85									4,350 (20.1)	4,450 (31.1)
90										3,800 (24.6)
95										3,250 (15.3)
97										*2,000 (8.7)
Minimum boom angle (°) for indicated length (no load)										0
Maximum boom length (ft.) at 0° boom angle (no load)										102

NOTE: () Boom angles are in degrees.

*Loads are structurally limited.

#RCL operating code. Refer to RCL manual for operating instructions.

Lifting Capacities at Zero Degree Boom Angle										
Boom Angle	Main Boom Length in Feet									
	31.2	38-A	46-B	54-C	62-D	70-E	78-F	86-G	94-H	
0°	12,450 (27)	9,250 (33.8)	6,750 (41.8)	5,000 (49.8)	3,700 (57.8)	2,700 (65.8)	1,950 (73.8)	1,300 (81.8)	700 (89.8)	

NOTE: () Reference radii in feet.

80109846

THIS CHART IS ONLY A GUIDE AND SHOULD NOT BE USED TO OPERATE THE CRANE.

The individual crane's load chart, operating instructions and other instructional plates must be read and understood prior to operating the crane.

Load chart

NBT50/NBT55



31,1 m
(102 ft)



1361 kg
(3000 lb)



100%



Over Rear

Radius in Feet	#0003									
	Main Boom Length in Feet									
	31.2	38-A	46-B	54-C	62-D	70-E	78-F	86-G	94-H	102
8	100,000 (68.3)									
10	93,350 (64.2)	51,200 (69.2)	50,350 (73.1)	50,200 (75.9)	50,000 (78.0)	41,000 (79.6)				
12	80,950 (59.9)	51,200 (65.8)	50,350 (70.4)	50,200 (73.7)	50,000 (76.1)	41,000 (77.9)	34,350 (79.4)			
15	64,400 (53)	51,200 (60.7)	50,350 (66.4)	50,200 (70.3)	50,000 (73.3)	41,000 (75.5)	34,350 (77.3)	26,800 (78.7)		
20	47,300 (39.8)	47,650 (51.3)	47,950 (59.3)	48,150 (64.5)	46,450 (68.4)	41,000 (71.3)	34,350 (73.7)	26,800 (75.5)	23,000 (77.1)	18,000 (78.2)
25	31,500 (20)	37,050 (40.3)	37,400 (51.4)	37,600 (58.3)	37,800 (63.2)	35,950 (66.9)	30,150 (69.7)	26,800 (72.2)	23,000 (74.2)	18,000 (75.6)
30		29,000 (25.7)	29,850 (42.6)	30,050 (51.6)	30,250 (57.7)	30,350 (62.2)	26,750 (65.7)	23,800 (68.6)	21,250 (71)	18,000 (72.9)
35			24,450 (31.9)	24,700 (44.2)	24,850 (51.8)	25,000 (57.3)	23,700 (61.5)	21,250 (64.9)	18,950 (67.7)	17,000 (69.9)
40			16,000 (15.1)	20,500 (35.6)	20,700 (45.4)	20,850 (52.1)	21,000 (57.1)	19,100 (61.1)	17,100 (64.3)	15,350 (66.9)
45				16,750 (24.4)	16,950 (38.2)	17,100 (46.4)	17,200 (52.4)	17,050 (57.1)	15,550 (60.8)	13,950 (63.7)
50					14,150 (29.5)	14,250 (40.2)	14,400 (47.3)	14,500 (52.8)	14,200 (57.1)	12,700 (60.5)
55					11,050 (18.5)	12,100 (33.0)	12,200 (41.8)	12,300 (48.2)	12,350 (53.2)	11,650 (57.1)
60						10,400 (24.9)	10,550 (36.3)	10,650 (43.7)	10,700 (49.4)	10,750 (53.8)
65						*6,400 (9.8)	9,100 (29.1)	9,200 (38.4)	9,300 (44.9)	9,350 (50)
70							*7,900 (19.4)	8,000 (32.2)	8,050 (40.1)	8,150 (46)
75								6,950 (24.7)	7,050 (34.7)	7,100 (41.6)
80								*5,200 (13.2)	6,150 (28.4)	6,250 (36.8)
85									5,400 (20.3)	5,450 (31.3)
90										4,800 (24.8)
95										*4,000 (15.5)
97										*2,000 (8.7)
Minimum boom angle (°) for indicated length (no load)										0
Maximum boom length (ft.) at 0° boom angle (no load)										102

NOTE: () Boom angles are in degrees.

*Loads are structurally limited.

#RCL operating code. Refer to RCL manual for operating instructions.

Boom Angle	Lifting Capacities at Zero Degree Boom Angle									
	Main Boom Length in Feet									
	31.2	38-A	46-B	54-C	62-D	70-E	78-F	86-G	94-H	
0°	12,450 (27)	9,250 (33.8)	6,750 (41.8)	5,000 (49.8)	3,700 (57.8)	2,700 (65.8)	1,950 (73.8)	1,300 (81.8)	700 (89.8)	

NOTE: () Reference radii in feet.

80109850

THIS CHART IS ONLY A GUIDE AND SHOULD NOT BE USED TO OPERATE THE CRANE.
The individual crane's load chart, operating instructions and other instructional plates must be read and understood prior to operating the crane.

Load chart

NBT50/NBT55



7,9 m - 13,7 m
(26 ft - 45 ft)



1361 kg
(3000 lb)



100%



360°

Radius in Feet	**26 ft. LENGTH		45 ft. LENGTH	
	#0005	#0007	#0009	#0011
	0° OFFSET	30° OFFSET	0° OFFSET	30° OFFSET
25	8,100 (77.9)			
30	8,100 (75.8)		5,450 (77.9)	
35	8,100 (73.8)	5,700 (79.5)	5,450 (76.2)	
40	8,100 (71.6)	5,700 (77.2)	5,450 (74.4)	
45	8,100 (69.5)	5,700 (75.1)	5,450 (72.6)	
50	8,050 (67.2)	5,700 (72.7)	5,450 (70.7)	3,150 (78.8)
55	7,450 (64.7)	5,700 (70.2)	5,450 (68.9)	3,150 (76.8)
60	7,000 (62.3)	5,550 (67.7)	5,350 (66.8)	3,150 (74.8)
65	6,500 (59.7)	5,350 (65)	5,000 (64.7)	3,150 (72.6)
70	6,000 (57)	5,200 (62.3)	4,700 (62.6)	3,150 (70.3)
75	5,650 (54.3)	5,050 (59.4)	4,400 (60.3)	3,050 (68)
80	5,100 (51.3)	4,800 (56.4)	4,200 (58.1)	2,950 (65.5)
85	4,350 (48.1)	4,550 (53.2)	3,950 (55.7)	2,850 (63)
90	3,750 (44.8)	4,150 (49.7)	3,750 (53.2)	2,800 (60.4)
95	3,150 (41.3)	3,550 (46)	3,550 (50.7)	2,750 (57.7)
100	2,700 (37.5)	2,950 (41.8)	3,400 (48)	2,700 (54.9)
105	2,250 (33.3)	2,450 (37.3)	3,050 (45.1)	2,650 (51.9)
110	1,850 (28.6)	2,000 (32.1)	2,650 (41.9)	2,600 (48.6)
115	1,500 (23)		2,250 (38.6)	2,550 (45.1)
120	1,200 (15.5)		1,950 (35)	2,250 (41.1)
125			1,650 (31)	1,850 (36.4)
130			1,350 (26.4)	1,500 (30.9)
135			1,100 (20.9)	
140			850 (13.2)	
Min. boom angle for indicated length (no load)	10°	30°	10°	30°
Max. boom length at 0° boom angle (no load)	70 ft.		70 ft.	

NOTE: () Boom angles are in degrees.

80109852

#RCL operating code. Refer to RCL manual for instructions

**26 ft. capacities are applicable to both 26' fixed and 26' tele extension.

Boom extension capacity notes:

- All capacities above the bold line are based on structural strength limitations.
 - 26 ft and 45 ft extension lengths may be used for single line lifting service.
 - Radii listed are for a fully extended boom with the boom extension erected. For main boom lengths less than fully extended, the rated loads are determined by boom angle. Use only the column which corresponds to the boom extension length and offset for which the machine is configured. For boom angles not shown, use the rating of the next lower boom angle.
- Warning:** Operation of this machine with heavier loads than the capacities listed is strictly prohibited. Machine tipping with boom extension occurs rapidly and without advance warning.
- Boom angle is the angle above or below horizontal of the longitudinal axis of the boom base section after lifting rated load.
 - Capacities listed are with outriggers properly extended and vertical jacks set only.

THIS CHART IS ONLY A GUIDE AND SHOULD NOT BE USED TO OPERATE THE CRANE.

The individual crane's load chart, operating instructions and other instructional plates must be read and understood prior to operating the crane.

Load chart

NBT50/NBT55



7,9 m - 13,7 m
(26 ft - 45 ft)



1361 kg
(3000 lb)



100%



Over Rear

Radius in Feet	**26 ft. LENGTH		45 ft. LENGTH	
	#0006	#0008	#0010	#0012
	0° OFFSET	30° OFFSET	0° OFFSET	30° OFFSET
25	8,100 (77.9)			
30	8,100 (75.8)		5,450 (77.9)	
35	8,100 (73.8)	5,700 (79.5)	5,450 (76.2)	
40	8,100 (71.6)	5,700 (77.2)	5,450 (74.4)	
45	8,100 (69.5)	5,700 (75.1)	5,450 (72.6)	
50	8,050 (67.2)	5,700 (72.7)	5,450 (70.7)	3,150 (78.8)
55	7,450 (64.7)	5,700 (70.2)	5,450 (68.9)	3,150 (76.8)
60	7,000 (62.3)	5,550 (67.7)	5,350 (66.8)	3,150 (74.8)
65	6,500 (59.7)	5,350 (65)	5,000 (64.7)	3,150 (72.6)
70	6,000 (57)	5,200 (62.3)	4,700 (62.6)	3,150 (70.3)
75	5,650 (54.3)	5,050 (59.4)	4,400 (60.3)	3,050 (68)
80	5,300 (51.4)	4,800 (56.4)	4,200 (58.1)	2,950 (65.5)
85	5,000 (48.4)	4,550 (53.2)	3,950 (55.7)	2,850 (63)
90	4,450 (45.1)	4,350 (49.8)	3,750 (53.2)	2,800 (60.4)
95	3,900 (41.6)	4,150 (46.2)	3,550 (50.7)	2,750 (57.7)
100	3,450 (37.8)	3,750 (42.2)	3,400 (48)	2,700 (54.9)
105	3,050 (33.7)	3,250 (37.6)	3,250 (45.3)	2,650 (51.9)
110	2,650 (29)	2,800 (32.4)	3,100 (42.3)	2,600 (48.6)
115	2,250 (23.4)		2,900 (39.1)	2,550 (45.1)
120	*1,600 (15.7)		2,550 (35.4)	2,500 (41.2)
125			2,300 (31.5)	2,450 (36.7)
130			2,000 (26.9)	2,150 (31.1)
135			1,750 (21.5)	
140			900 (13.2)	
Min. boom angle for indicated length (no load)	10°	30°	10°	30°
Max. boom length at 0° boom angle (no load)	70 ft.		70 ft.	

NOTE: () Boom angles are in degrees. 80109853

*Loads are structurally limited.
#RCL operating code. Refer to RCL manual for instructions.
**26 ft. capacities are applicable to both 26' fixed and 26' tele extension.

Boom extension capacity notes:

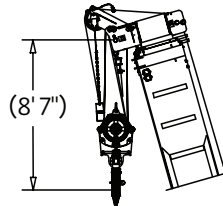
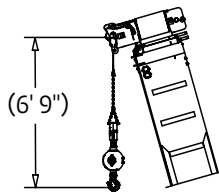
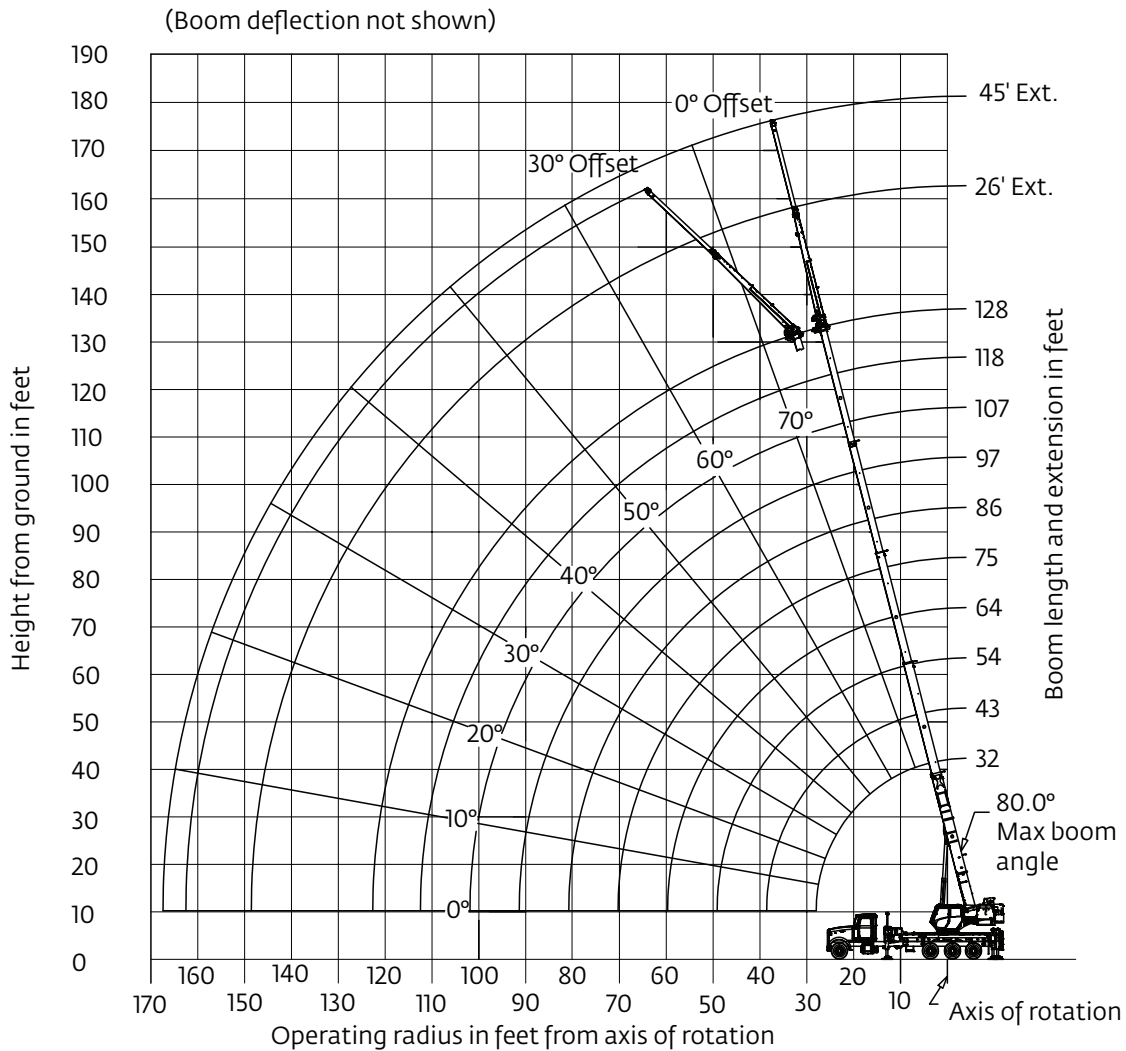
1. All capacities above the bold line are based on structural strength limitations.
 2. 26 ft and 45 ft extension lengths may be used for single line lifting service.
 3. Radii listed are for a fully extended boom with the boom extension erected. For main boom lengths less than fully extended, the rated loads are determined by boom angle. Use only the column which corresponds to the boom extension length and offset for which the machine is configured. For boom angles not shown, use the rating of the next lower boom angle.
- Warning:** Operation of this machine with heavier loads than the capacities listed is strictly prohibited. Machine tipping with boom extension occurs rapidly and without advance warning.
4. Boom angle is the angle above or below horizontal of the longitudinal axis of the boom base section after lifting rated load.
 5. Capacities listed are with outriggers properly extended and vertical jacks set only.

THIS CHART IS ONLY A GUIDE AND SHOULD NOT BE USED TO OPERATE THE CRANE.

The individual crane's load chart, operating instructions and other instructional plates must be read and understood prior to operating the crane.

Working range

NBT50/NBT55: 128 ft main boom, with extensions



Dimensions are for largest furnished hook block and headache ball with anti-two block activated.

*This drawing shows the physical reach of the machine. Always refer to the load chart to see which portions of this diagram are valid for the specific machine configuration and where the loads are structurally or stability limited.

*THIS CHART IS ONLY A GUIDE AND SHOULD NOT BE USED TO OPERATE THE CRANE.
The individual crane's load chart, operating instructions and other instructional plates must be read and understood prior to operating the crane.*

Load chart

NBT55



39,0 m
(128 ft)



2722 kg
(6000 lb)



100%



360°

Radius in Feet	#0001									
	Main Boom Length in Feet									
	31.7	43-A	54-B	64-C	75-D	86-E	97-F	107-G	118-H	128
8	110,000 (68.1)									
10	92,300 (64)	39,200 (71.6)	39,700 (75.6)							
12	81,200 (59.8)	39,200 (68.7)	39,700 (73.4)	40,300 (76.4)	34,100 (78.7)					
15	65,400 (53.1)	39,200 (64.4)	39,700 (70.1)	40,300 (73.5)	34,100 (76.4)	22,650 (78.3)				
20	47,750 (40.3)	39,200 (56.7)	39,700 (64.4)	40,300 (68.8)	34,100 (72.5)	22,650 (75)	17,800 (77.1)	14,700 (78.6)		
25	31,650 (21.8)	37,700 (47.5)	38,150 (58)	37,150 (63.9)	30,100 (68.4)	22,650 (71.5)	17,800 (74.2)	14,700 (76.1)	12,900 (77.8)	9,600 (78.9)
30		30,200 (37.3)	30,700 (51.3)	31,000 (58.6)	27,100 (64.2)	20,400 (68)	17,800 (71.2)	14,700 (73.5)	12,900 (75.6)	9,600 (76.9)
35		22,300 (23.6)	25,100 (43.9)	25,350 (53.1)	24,600 (59.8)	18,500 (64.3)	16,300 (68)	14,700 (70.8)	12,900 (73.2)	9,600 (74.8)
40			20,700 (35.2)	21,050 (47)	21,350 (55.1)	17,050 (60.5)	15,100 (64.7)	13,650 (68)	12,050 (70.8)	9,600 (72.7)
45			*16,400 (24)	16,950 (40.3)	17,200 (50)	15,800 (56.5)	14,000 (61.5)	12,550 (65)	11,300 (68.2)	9,600 (70.6)
50				13,900 (32.4)	14,150 (44.6)	14,400 (52.3)	12,850 (58)	11,750 (62)	10,650 (65.8)	9,600 (68.4)
55				11,600 (22.2)	11,850 (38.6)	12,050 (47.8)	12,000 (54.4)	10,950 (59.2)	10,000 (63.2)	8,750 (65.9)
60					10,100 (32.4)	10,300 (43.3)	10,450 (50.8)	10,300 (56)	9,400 (60.4)	7,850 (63.3)
65					8,550 (23.9)	8,750 (37.9)	8,950 (46.6)	9,100 (52.4)	8,850 (57.5)	7,000 (60.6)
70					*4,650 (9.2)	7,500 (31.8)	7,650 (42.1)	7,800 (48.7)	7,950 (54.3)	6,300 (57.9)
75						6,450 (24.3)	6,600 (37.2)	6,750 (44.7)	6,850 (51)	5,700 (55)
80						*4,400 (12.8)	5,700 (31.6)	5,800 (40.5)	5,950 (47.5)	5,150 (52.1)
85							4,900 (24.8)	5,000 (35.8)	5,150 (43.8)	4,650 (49)
90							*3,850 (15.3)	4,300 (30.4)	4,450 (39.8)	4,150 (45.7)
95								3,700 (24)	3,800 (35.4)	3,700 (42.2)
100								*2,800 (14.9)	3,300 (30.5)	3,300 (38.4)
105									2,800 (24.6)	2,850 (34.2)
110									2,350 (16.8)	2,450 (29.5)
115										*1,900 (23.7)
120										*1,100 (15.8)
Minimum boom angle (°) for indicated length (no load)							0	5	8	10
Maximum boom length (ft.) at 0° boom angle (no load)							97			

NOTE: () Boom angles are in degrees.
*Loads are structurally limited.
#RCL operating code. Refer to RCL manual for operating instructions.

Boom Angle	Lifting Capacities at Zero Degree Boom Angle									
	Main Boom Length in Feet									
	31.7	43-A	54-B	64-C	75-D	86-E				
0°	12,900 (27.6)	7,600 (38.8)	4,850 (49.8)	3,700 (59.8)	2,200 (70.8)	1,150 (81.8)				

NOTE: () Reference radii in feet.

80083162

THIS CHART IS ONLY A GUIDE AND SHOULD NOT BE USED TO OPERATE THE CRANE.
The individual crane's load chart, operating instructions and other instructional plates must be read and understood prior to operating the crane.

Load chart

NBT55



39,0 m
(128 ft)



2722 kg
(6000 lb)



100%



Over Rear

Radius in Feet	#0003									
	Main Boom Length in Feet									
	31.7	43-A	54-B	64-C	75-D	86-E	97-F	107-G	118-H	128
8	110,000 (68.1)									
10	92,300 (64)	39,200 (71.6)	39,700 (75.6)							
12	81,200 (59.8)	39,200 (68.7)	39,700 (73.4)	40,300 (76.4)	34,100 (78.7)					
15	65,400 (53.1)	39,200 (64.4)	39,700 (70.1)	40,300 (73.5)	34,100 (76.4)	22,650 (78.3)				
20	47,750 (40.3)	39,200 (56.7)	39,700 (64.4)	40,300 (68.8)	34,100 (72.5)	22,650 (75)	17,800 (77.1)	14,700 (78.6)		
25	31,650 (21.8)	37,700 (47.5)	38,150 (58)	37,150 (63.9)	30,100 (68.4)	22,650 (71.5)	17,800 (74.2)	14,700 (76.1)	12,900 (77.8)	9,600 (78.9)
30		30,200 (37.3)	30,700 (51.3)	31,000 (58.6)	27,100 (64.2)	20,400 (68)	17,800 (71.2)	14,700 (73.5)	12,900 (75.6)	9,600 (76.9)
35		22,300 (23.6)	25,100 (43.9)	25,350 (53.1)	24,600 (59.8)	18,500 (64.3)	16,300 (68)	14,700 (70.8)	12,900 (73.2)	9,600 (74.8)
40			20,950 (35.2)	21,250 (47)	21,500 (55.1)	17,050 (60.5)	15,100 (64.7)	13,650 (68)	12,050 (70.8)	9,600 (72.7)
45			16,400 (24)	18,000 (40.3)	18,250 (50)	15,800 (56.5)	14,000 (61.5)	12,550 (65)	11,300 (68.2)	9,600 (70.6)
50				15,250 (32.4)	15,500 (44.6)	14,600 (52.3)	12,850 (58)	11,750 (62)	10,650 (65.8)	9,600 (68.4)
55				*11,900 (22.2)	13,100 (38.6)	13,300 (47.8)	12,000 (54.4)	10,950 (59.2)	10,000 (63.2)	8,750 (65.9)
60					11,200 (32.4)	11,400 (43.3)	11,250 (50.8)	10,300 (56)	9,400 (60.4)	7,850 (63.3)
65					9,700 (23.9)	9,900 (37.9)	10,100 (46.6)	9,700 (52.4)	8,850 (57.5)	7,000 (60.6)
70					*4,650 (9.2)	8,600 (31.8)	8,750 (42.1)	8,900 (48.7)	8,400 (54.3)	6,300 (57.9)
75						7,450 (24.3)	7,600 (37.2)	7,750 (44.7)	7,900 (51)	5,700 (55)
80						*4,400 (12.8)	6,650 (31.6)	6,800 (40.5)	6,900 (47.5)	5,150 (52.1)
85							5,800 (24.8)	5,950 (35.8)	6,050 (43.8)	4,650 (49)
90							*3,850 (15.3)	5,200 (30.4)	5,300 (39.8)	4,150 (45.7)
95								4,550 (24)	4,650 (35.4)	3,700 (42.2)
100								*2,800 (14.9)	4,050 (30.5)	3,300 (38.4)
105									3,550 (24.6)	3,000 (34.2)
110									*2,400 (16.8)	2,650 (29.5)
115										1,900 (23.7)
120										1,100 (15.8)
Minimum boom angle (°) for indicated length (no load)							0	5	8	10
Maximum boom length (ft.) at 0° boom angle (no load)							97			

NOTE: () Boom angles are in degrees.

*Loads are structurally limited.

#RCL operating code. Refer to RCL manual for operating instructions.

Lifting Capacities at Zero Degree Boom Angle										
Boom Angle	Main Boom Length in Feet									
	31.7	43-A	54-B	64-C	75-D	86-E				
0°	12,900 (27.6)	7,600 (38.8)	4,850 (49.8)	3,700 (59.8)	2,200 (70.8)	1,150 (81.8)				

NOTE: () Reference radii in feet.

80083166

THIS CHART IS ONLY A GUIDE AND SHOULD NOT BE USED TO OPERATE THE CRANE.
The individual crane's load chart, operating instructions and other instructional plates must be read and understood prior to operating the crane.

Load chart

NBT55



7,9 m - 13,7 m
(26 ft - 45 ft)



2722 kg
(6000 lb)



100%



360°

Radius in Feet	**26 ft. LENGTH		45 ft. LENGTH	
	#0005	#0007	#0009	#0011
	0° OFFSET	30° OFFSET	0° OFFSET	30° OFFSET
35	5,200 (76.9)			
40	5,200 (75.3)		3,700 (77.3)	
45	5,200 (73.6)		3,700 (75.8)	
50	5,200 (71.9)	4,800 (77.4)	3,700 (74.4)	
55	5,200 (70.1)	4,800 (75.6)	3,700 (72.9)	
60	5,200 (68.4)	4,800 (73.7)	3,700 (71.4)	
65	5,200 (66.7)	4,800 (71.7)	3,700 (69.9)	2,500 (77)
70	4,850 (64.7)	4,650 (69.7)	3,700 (68.4)	2,500 (75.2)
75	4,500 (62.6)	4,400 (67.5)	3,700 (66.9)	2,500 (73.5)
80	4,250 (60.5)	4,150 (65.2)	3,700 (65.4)	2,500 (71.7)
85	3,950 (58.3)	4,000 (62.9)	3,700 (63.8)	2,500 (69.8)
90	3,800 (56.1)	3,800 (60.5)	3,550 (61.9)	2,500 (67.9)
95	3,650 (53.8)	3,650 (58.1)	3,250 (59.9)	2,500 (65.9)
100	3,150 (51.2)	3,350 (55.4)	3,000 (57.8)	2,500 (63.9)
105	2,600 (48.4)	2,900 (52.5)	2,700 (55.6)	2,450 (61.7)
110	2,100 (45.5)	2,550 (49.5)	2,500 (53.5)	2,400 (59.5)
115	1,700 (42.5)	2,100 (46.3)	2,300 (51.2)	2,350 (57.1)
120	1,350 (39.3)	*1,650 (42.7)	2,050 (48.7)	2,300 (54.7)
125	950 (35.8)	*1,200 (38.9)	1,750 (46)	2,250 (52.1)
130	650 (32.1)	*850 (34.8)	1,500 (43.3)	2,000 (49.1)
135		*450 (30)	1,200 (40.4)	1,600 (45.9)
140			900 (37.2)	1,250 (42.3)
145			650 (33.9)	*900 (38.2)
150				*600 (33.9)
Min. boom angle for indicated length (no load)	29°	30°	30°	31°
Max. boom length at 0° boom angle (no load)	64 ft.		64 ft.	

NOTE: () Boom angles are in degrees. 80084530

#RCL operating code. Refer to RCL manual for instructions.

*Loads are structurally limited.

**26 ft. capacities are applicable to both 26' fixed and 26' tele extension.

Boom extension capacity notes:

1. All capacities above the bold line are based on structural strength limitations.
 2. 26 ft and 45 ft extension lengths may be used for single line lifting service.
 3. Radii listed are for a fully extended boom with the boom extension erected. For main boom lengths less than fully extended, the rated loads are determined by boom angle. Use only the column which corresponds to the boom extension length and offset for which the machine is configured. For boom angles not shown, use the rating of the next lower boom angle.
- Warning:** Operation of this machine with heavier loads than the capacities listed is strictly prohibited. Machine tipping with boom extension occurs rapidly and without advance warning.
4. Boom angle is the angle above or below horizontal of the longitudinal axis of the boom base section after lifting rated load.
 5. Capacities listed are with outriggers properly extended and vertical jacks set only.

THIS CHART IS ONLY A GUIDE AND SHOULD NOT BE USED TO OPERATE THE CRANE.

The individual crane's load chart, operating instructions and other instructional plates must be read and understood prior to operating the crane.

Load chart

NBT55



7,9 m - 13,7 m
(26 ft - 45 ft)



2722 kg
(6000 lb)



100%



Over Rear

Radius in Feet	**26 ft. LENGTH		45 ft. LENGTH	
	#0006	#0008	#0010	#0012
	0° OFFSET	30° OFFSET	0° OFFSET	30° OFFSET
35	5,200 (76.9)			
40	5,200 (75.3)		3,700 (77.3)	
45	5,200 (73.6)		3,700 (75.8)	
50	5,200 (71.9)	4,800 (77.4)	3,700 (74.4)	
55	5,200 (70.1)	4,800 (75.6)	3,700 (72.9)	
60	5,200 (68.4)	4,800 (73.7)	3,700 (71.4)	
65	5,200 (66.7)	4,800 (71.7)	3,700 (69.9)	2,500 (77)
70	4,850 (64.7)	4,650 (69.7)	3,700 (68.4)	2,500 (75.2)
75	4,500 (62.6)	4,400 (67.5)	3,700 (66.9)	2,500 (73.5)
80	4,250 (60.5)	4,150 (65.2)	3,700 (65.4)	2,500 (71.7)
85	3,950 (58.3)	4,000 (62.9)	3,700 (63.8)	2,500 (69.8)
90	3,800 (56.1)	3,800 (60.5)	3,550 (61.9)	2,500 (67.9)
95	3,650 (53.8)	3,650 (58.1)	3,250 (59.9)	2,500 (65.9)
100	3,150 (51.2)	3,350 (55.4)	3,000 (57.8)	2,500 (63.9)
105	2,600 (48.4)	2,900 (52.5)	2,700 (55.6)	2,450 (61.7)
110	2,100 (45.5)	2,550 (49.5)	2,500 (53.5)	2,400 (59.5)
115	1,700 (42.5)	2,150 (46.3)	2,300 (51.2)	2,350 (57.1)
120	1,350 (39.3)	1,650 (42.7)	2,050 (48.7)	2,300 (54.7)
125	950 (35.8)	1,200 (38.9)	1,750 (46)	2,250 (52.1)
130	650 (32.1)	850 (34.8)	1,500 (43.3)	2,000 (49.1)
135		450 (30)	1,200 (40.4)	1,750 (45.9)
140			900 (37.2)	1,350 (42.3)
145			650 (33.9)	900 (38.2)
150				600 (33.9)
Min. boom angle for indicated length (no load)	29°	30°	30°	31°
Max. boom length at 0° boom angle (no load)	64 ft.		64 ft.	

NOTE: () Boom angles are in degrees. 80084531

#RCL operating code. Refer to RCL manual for instructions.

**26 ft. capacities are applicable to both 26' fixed and 26' tele extension.

Boom extension capacity notes:

- All capacities above the bold line are based on structural strength limitations.
 - 26 ft and 45 ft extension lengths may be used for single line lifting service.
 - Radii listed are for a fully extended boom with the boom extension erected. For main boom lengths less than fully extended, the rated loads are determined by boom angle. Use only the column which corresponds to the boom extension length and offset for which the machine is configured. For boom angles not shown, use the rating of the next lower boom angle.
- Warning:** Operation of this machine with heavier loads than the capacities listed is strictly prohibited. Machine tipping with boom extension occurs rapidly and without advance warning.
- Boom angle is the angle above or below horizontal of the longitudinal axis of the boom base section after lifting rated load.
 - Capacities listed are with outriggers properly extended and vertical jacks set only.

THIS CHART IS ONLY A GUIDE AND SHOULD NOT BE USED TO OPERATE THE CRANE.

The individual crane's load chart, operating instructions and other instructional plates must be read and understood prior to operating the crane.

Load chart

NBT50/55



39,0 m
(128 ft)



1361 kg
(3000 lb)



100%



360°

Radius in Feet	#0001									
	Main Boom Length in Feet									
	31.7	43-A	54-B	64-C	75-D	86-E	97-F	107-G	118-H	128
8	100,000 (68.1)									
10	92,250 (64)	39,200 (71.6)	39,700 (75.6)							
12	80,100 (59.8)	39,200 (68.7)	39,700 (73.4)	40,300 (76.4)	34,100 (78.7)					
15	63,450 (53.1)	39,200 (64.4)	39,700 (70.1)	40,300 (73.5)	34,100 (76.4)	22,650 (78.3)				
20	46,300 (40.3)	39,200 (56.7)	39,700 (64.4)	40,300 (68.8)	34,100 (72.5)	22,650 (75)	17,800 (77.1)	14,700 (78.6)		
25	31,650 (21.8)	36,500 (47.5)	36,950 (58)	37,150 (63.9)	30,100 (68.4)	22,650 (71.5)	17,800 (74.2)	14,700 (76.1)	12,900 (77.8)	
30		28,950 (37.3)	29,400 (51.3)	29,700 (58.6)	27,100 (64.2)	20,400 (68)	17,800 (71.2)	14,700 (73.5)	12,900 (75.6)	9,600 (76.9)
35		22,300 (23.6)	23,900 (43.9)	24,300 (53.1)	24,550 (59.8)	18,500 (64.3)	16,300 (68)	14,700 (70.8)	12,900 (73.2)	9,600 (74.8)
40			18,600 (35.2)	18,950 (47)	19,250 (55.1)	17,050 (60.5)	15,100 (64.7)	13,650 (68)	12,050 (70.8)	9,600 (72.7)
45			14,800 (24)	15,150 (40.3)	15,450 (50)	15,650 (56.5)	14,000 (61.5)	12,550 (65)	11,300 (68.2)	9,600 (70.6)
50				12,350 (32.4)	12,600 (44.6)	12,800 (52.3)	12,850 (58)	11,750 (62)	10,650 (65.8)	9,600 (68.4)
55				10,300 (22.2)	10,600 (38.6)	10,800 (47.8)	11,000 (54.4)	10,950 (59.2)	10,000 (63.2)	8,750 (65.9)
60					8,850 (32.4)	9,050 (43.3)	9,250 (50.8)	9,400 (56)	9,400 (60.4)	7,850 (63.3)
65					7,450 (23.9)	7,650 (37.9)	7,800 (46.6)	7,950 (52.4)	8,100 (57.5)	7,000 (60.6)
70					*4,650 (9.2)	6,500 (31.8)	6,650 (42.1)	6,800 (48.7)	6,900 (54.3)	6,300 (57.9)
75						5,500 (24.3)	5,650 (37.2)	5,800 (44.7)	5,900 (51)	5,700 (55)
80							*4,400 (12.8)	4,800 (31.6)	4,950 (40.5)	5,050 (47.5)
85								4,100 (24.8)	4,200 (35.8)	4,300 (43.8)
90								3,450 (15.3)	3,550 (30.4)	3,650 (39.8)
95									3,000 (24)	3,100 (35.4)
100									2,500 (14.9)	2,600 (30.5)
105										2,150 (24.6)
110										1,750 (16.8)
115										1,450 (23.7)
120										*1,100 (15.8)
Minimum boom angle (°) for indicated length (no load)							0	5	8	10
Maximum boom length (ft.) at 0° boom angle (no load)							97			

NOTE: () Boom angles are in degrees.

*Loads are structurally limited.

#RCL operating code. Refer to RCL manual for operating instructions.

Boom Angle	Lifting Capacities at Zero Degree Boom Angle									
	Main Boom Length in Feet									
	31.7	43-A	54-B	64-C	75-D	86-E				
0°	12,900 (27.6)	7,600 (38.8)	4,850 (49.8)	3,700 (59.8)	2,200 (70.8)	1,150 (81.8)				

NOTE: () Reference radii in feet.

80109641

THIS CHART IS ONLY A GUIDE AND SHOULD NOT BE USED TO OPERATE THE CRANE.
The individual crane's load chart, operating instructions and other instructional plates must be read and understood prior to operating the crane.

Load chart

NBT50/55



39,0 m
(128 ft)



1361 kg
(3000 lb)



100%



Over Rear

Radius in Feet	#0003									
	Main Boom Length in Feet									
	31.7	43-A	54-B	64-C	75-D	86-E	97-F	107-G	118-H	128
8	100,000 (68.1)									
10	92,250 (64)	39,200 (71.6)	39,700 (75.6)							
12	80,100 (59.8)	39,200 (68.7)	39,700 (73.4)	40,300 (76.4)	34,100 (78.7)					
15	63,450 (53.1)	39,200 (64.4)	39,700 (70.1)	40,300 (73.5)	34,100 (76.4)	22,650 (78.3)				
20	46,300 (40.3)	39,200 (56.7)	39,700 (64.4)	40,300 (68.8)	34,100 (72.5)	22,650 (75)	17,800 (77.1)	14,700 (78.6)		
25	31,650 (21.8)	36,500 (47.5)	36,950 (58)	37,150 (63.9)	30,100 (68.4)	22,650 (71.5)	17,800 (74.2)	14,700 (76.1)	12,900 (77.8)	9,600 (78.9)
30		28,950 (37.3)	29,400 (51.3)	29,700 (58.6)	27,100 (64.2)	20,400 (68)	17,800 (71.2)	14,700 (73.5)	12,900 (75.6)	9,600 (76.9)
35		22,300 (23.6)	24,000 (43.9)	24,300 (53.1)	24,550 (59.8)	18,500 (64.3)	16,300 (68)	14,700 (70.8)	12,900 (73.2)	9,600 (74.8)
40			20,000 (35.2)	20,300 (47)	20,550 (55.1)	17,050 (60.5)	15,100 (64.7)	13,650 (68)	12,050 (70.8)	9,600 (72.7)
45			16,400 (40.3)	16,800 (50)	17,050 (56.5)	15,800 (61.5)	14,000 (65)	12,550 (68.2)	11,300 (70.6)	9,600 (76)
50			13,900 (32.4)	14,150 (44.6)	14,350 (52.3)	12,850 (58)	11,750 (62)	10,650 (65.8)	9,600 (68.4)	
55			11,650 (22.2)	11,900 (38.6)	12,100 (47.8)	12,000 (54.4)	10,950 (59.2)	10,000 (63.2)	8,750 (65.9)	
60				10,200 (32.4)	10,400 (43.3)	10,550 (50.8)	10,300 (56)	9,400 (60.4)	7,850 (63.3)	
65					8,700 (23.9)	8,900 (37.9)	9,050 (46.6)	9,200 (52.4)	8,850 (57.5)	7,000 (60.6)
70					*4,650 (9.2)	7,650 (31.8)	7,850 (42.1)	7,950 (48.7)	8,100 (54.3)	6,300 (57.9)
75						6,600 (24.3)	6,750 (37.2)	6,900 (44.7)	7,000 (51)	5,700 (55)
80						*4,400 (12.8)	5,850 (31.6)	6,000 (40.5)	6,100 (47.5)	5,150 (52.1)
85							5,100 (24.8)	5,200 (35.8)	5,300 (43.8)	4,650 (49)
90							*3,850 (15.3)	4,500 (30.4)	4,600 (39.8)	4,150 (45.7)
95								3,900 (24)	4,000 (35.4)	3,700 (42.2)
100								*2,800 (14.9)	3,450 (30.5)	3,300 (38.4)
105									2,950 (24.6)	3,000 (34.2)
110									*2,400 (16.8)	2,600 (29.5)
115										*1,900 (23.7)
120										*1,100 (15.8)
Minimum boom angle (°) for indicated length (no load)							0	5	8	10
Maximum boom length (ft.) at 0° boom angle (no load)							97			

NOTE: () Boom angles are in degrees.

*Loads are structurally limited.

#RCL operating code. Refer to RCL manual for operating instructions.

Boom Angle	Lifting Capacities at Zero Degree Boom Angle									
	Main Boom Length in Feet									
	31.7	43-A	54-B	64-C	75-D	86-E				
0°	12,900 (27.6)	7,600 (38.8)	4,850 (49.8)	3,700 (59.8)	2,200 (70.8)	1,150 (81.8)				

NOTE: () Reference radii in feet.

80109645

THIS CHART IS ONLY A GUIDE AND SHOULD NOT BE USED TO OPERATE THE CRANE.
The individual crane's load chart, operating instructions and other instructional plates must be read and understood prior to operating the crane.

Load chart

NBT50/55



7,9 m - 13,7 m
(26 ft - 45 ft)



1361 kg
(3000 lb)



100%



360°

Radius in Feet	**26 ft. LENGTH		45 ft. LENGTH	
	#0005	#0007	#0009	#0011
	0° OFFSET	30° OFFSET	0° OFFSET	30° OFFSET
35	5,200 (76.9)			
40	5,200 (75.3)		3,700 (77.3)	
45	5,200 (73.6)		3,700 (75.8)	
50	5,200 (71.9)	4,800 (77.4)	3,700 (74.4)	
55	5,200 (70.1)	4,800 (75.6)	3,700 (72.9)	
60	5,200 (68.4)	4,800 (73.7)	3,700 (71.4)	
65	5,200 (66.7)	4,800 (71.7)	3,700 (69.9)	2,500 (77)
70	4,850 (64.7)	4,650 (69.7)	3,700 (68.4)	2,500 (75.2)
75	4,500 (62.6)	4,400 (67.5)	3,700 (66.9)	2,500 (73.5)
80	4,250 (60.5)	4,150 (65.2)	3,700 (65.4)	2,500 (71.7)
85	3,450 (58.3)	4,000 (62.9)	3,700 (63.8)	2,500 (69.8)
90	3,450 (56.1)	3,800 (60.5)	3,550 (61.9)	2,500 (67.9)
95	3,000 (53.8)	3,550 (58.1)	3,250 (59.9)	2,500 (65.9)
100	2,450 (51.2)	2,950 (55.4)	3,000 (57.8)	2,500 (63.9)
105	2,000 (48.4)	2,450 (52.5)	2,700 (55.6)	2,450 (61.7)
110	1,600 (45.5)	1,950 (49.5)	2,400 (53.5)	2,400 (59.5)
115	1,200 (42.5)	1,500 (46.3)	2,000 (51.2)	2,350 (57.1)
120	850 (39.3)	1,100 (42.7)	1,650 (48.7)	2,200 (54.7)
125	550 (35.8)	750 (38.9)	1,300 (46)	1,800 (52.1)
130			1,000 (43.3)	1,450 (49.1)
135			700 (40.4)	1,050 (45.9)
140			450 (37.2)	800 (42.3)
145				500 (38.2)
Min. boom angle for indicated length (no load)	34°	34°	36°	36°
Max. boom length at 0° boom angle (no load)	64 ft.		64 ft.	

NOTE: () Boom angles are in degrees. 80109647

#RCL operating code. Refer to RCL manual for instructions.
**26 ft. capacities are applicable to both 26' fixed and 26' tele extension.

Boom extension capacity notes:

1. All capacities above the bold line are based on structural strength limitations.
2. 26 ft and 45 ft extension lengths may be used for single line lifting service.
3. Radii listed are for a fully extended boom with the boom extension erected. For main boom lengths less than fully extended, the rated loads are determined by boom angle. Use only the column which corresponds to the boom extension length and offset for which the machine is configured. For boom angles not shown, use the rating of the next lower boom angle.

Warning: Operation of this machine with heavier loads than the capacities listed is strictly prohibited. Machine tipping with boom extension occurs rapidly and without advance warning.

4. Boom angle is the angle above or below horizontal of the longitudinal axis of the boom base section after lifting rated load.
5. Capacities listed are with outriggers properly extended and vertical jacks set only.

THIS CHART IS ONLY A GUIDE AND SHOULD NOT BE USED TO OPERATE THE CRANE.

The individual crane's load chart, operating instructions and other instructional plates must be read and understood prior to operating the crane.

Load chart

NBT50/55



7,9 m - 13,7 m
(26 ft - 45 ft)



1361 kg
(3000 lb)



100%



Over Rear

Radius in Feet	**26 ft. LENGTH		45 ft. LENGTH	
	#0006	#0008	#0010	#0012
	0° OFFSET	30° OFFSET	0° OFFSET	30° OFFSET
35	5,200 (76.9)			
40	5,200 (75.3)		3,700 (77.3)	
45	5,200 (73.6)		3,700 (75.8)	
50	5,200 (71.9)	4,800 (77.4)	3,700 (74.4)	
55	5,200 (70.1)	4,800 (75.6)	3,700 (72.9)	
60	5,200 (68.4)	4,800 (73.7)	3,700 (71.4)	
65	5,200 (66.7)	4,800 (71.7)	3,700 (69.9)	2,500 (77)
70	4,850 (64.7)	4,650 (69.7)	3,700 (68.4)	2,500 (75.2)
75	4,500 (62.6)	4,400 (67.5)	3,700 (66.9)	2,500 (73.5)
80	4,250 (60.5)	4,150 (65.2)	3,700 (65.4)	2,500 (71.7)
85	3,950 (58.3)	4,000 (62.9)	3,700 (63.8)	2,500 (69.8)
90	3,800 (56.1)	3,800 (60.5)	3,550 (61.9)	2,500 (67.9)
95	3,650 (53.8)	3,650 (58.1)	3,250 (59.9)	2,500 (65.9)
100	3,150 (51.2)	3,350 (55.4)	3,000 (57.8)	2,500 (63.9)
105	2,600 (48.4)	2,900 (52.5)	2,700 (55.6)	2,450 (61.7)
110	2,100 (45.5)	2,550 (49.5)	2,500 (53.5)	2,400 (59.5)
115	1,700 (42.5)	2,150 (46.3)	2,300 (51.2)	2,350 (57.1)
120	1,350 (39.3)	1,650 (42.7)	2,050 (48.7)	2,300 (54.7)
125	950 (35.8)	1,200 (38.9)	1,750 (46)	2,250 (52.1)
130	650 (32.1)	850 (34.8)	1,500 (43.3)	2,100 (49.1)
135		450 (30)	1,200 (40.4)	1,700 (45.9)
140			900 (37.2)	*1,350 (42.3)
145			650 (33.9)	*900 (38.2)
150				*600 (33.9)
Min. boom angle for indicated length (no load)	29°	30°	30°	31°
Max. boom length at 0° boom angle (no load)	64 ft.		64 ft.	

NOTE: () Boom angles are in degrees. 80109648

#RCL operating code. Refer to RCL manual for instructions.

*Capacities are structurally limited.

**26 ft. capacities are applicable to both 26' fixed and 26' tele extension.

Boom extension capacity notes:

1. All capacities above the bold line are based on structural strength limitations.
 2. 26 ft and 45 ft extension lengths may be used for single line lifting service.
 3. Radii listed are for a fully extended boom with the boom extension erected. For main boom lengths less than fully extended, the rated loads are determined by boom angle. Use only the column which corresponds to the boom extension length and offset for which the machine is configured. For boom angles not shown, use the rating of the next lower boom angle.
- Warning:** Operation of this machine with heavier loads than the capacities listed is strictly prohibited. Machine tipping with boom extension occurs rapidly and without advance warning.
4. Boom angle is the angle above or below horizontal of the longitudinal axis of the boom base section after lifting rated load.
 5. Capacities listed are with outriggers properly extended and vertical jacks set only.

THIS CHART IS ONLY A GUIDE AND SHOULD NOT BE USED TO OPERATE THE CRANE.

The individual crane's load chart, operating instructions and other instructional plates must be read and understood prior to operating the crane.