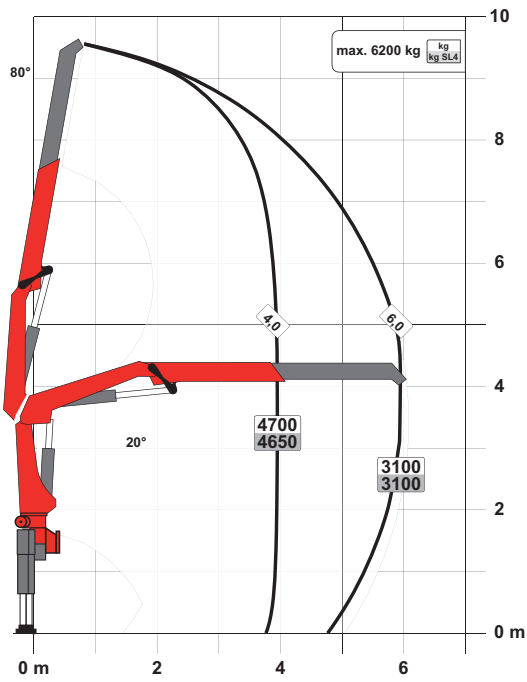


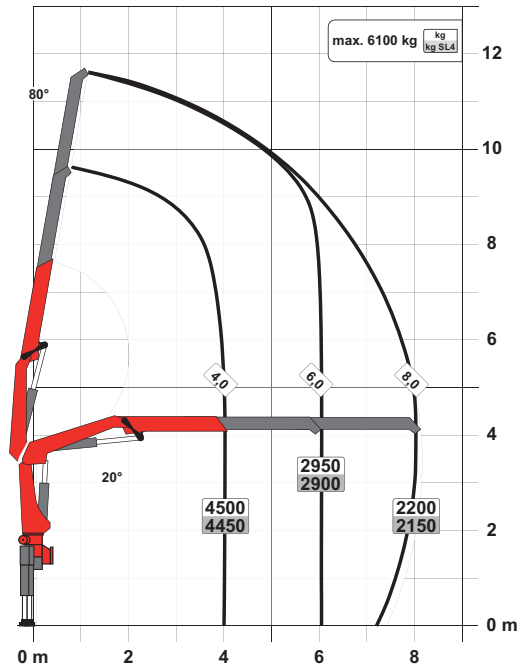
PK 19.001 SLD 5

# PERFECT DIMENSIONS

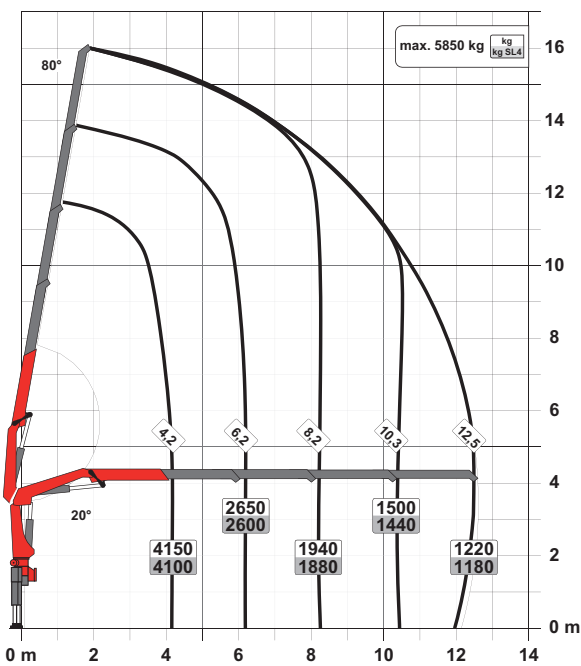
STD



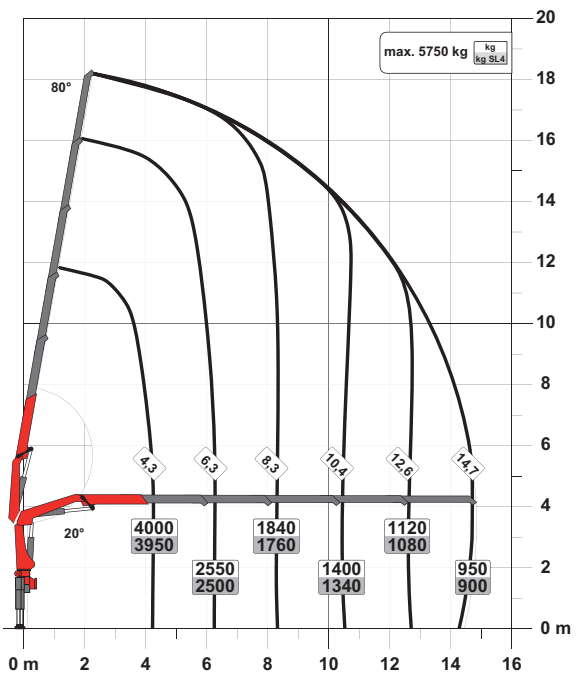
A

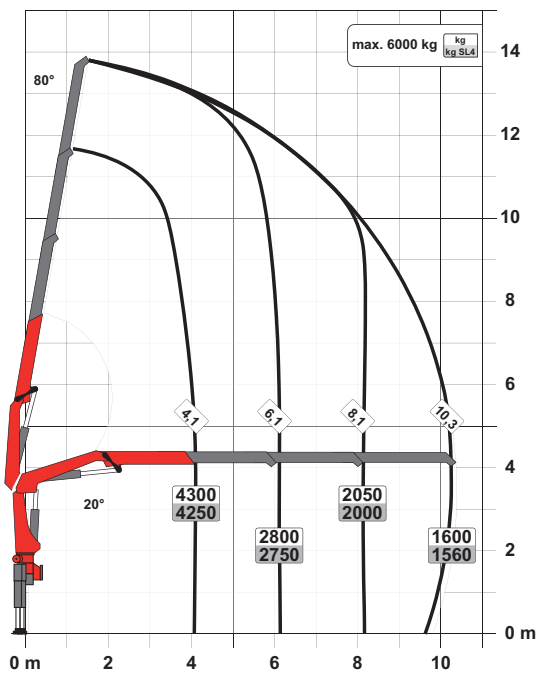


C



D



**B**

## SLD 5

- Single Link Plus
- Paltronic overload protection
- E-HPLS
- Load Sensing valve
- Radio remote control with LED display
- Optional:
  - Stability monitoring system ISC-S (standard for CE), HPSC-L, HPSC-E
  - Rope winch 2.5t on the knuckle boom
- NON-CE and CE model

## Technical specifications

### EN 12999 HC1 HD4/S2

|                               |                           |                            |
|-------------------------------|---------------------------|----------------------------|
| Max. lifting moment           | 18.5 mt/181.4 kNm         | 133780 ft.lb               |
| Max. lifting capacity         | 6200 kg/60.8 kN           | 13700 lb                   |
| Max. hydraulic outreach       | 14.8 m                    | 48' 7"                     |
| Max. manual outreach          | 19.0 m                    | 62' 4"                     |
| Slewing angle                 | 420°                      |                            |
| Slewing torque                | 2.0 mt/19.6 kNm           | 14460 ft.lb                |
| Stabiliser spread (std./max.) | 5.0 m/6.6 m               | 16' 5"/21' 8"              |
| Fitting space required (std.) | 0.83 m                    | 2' 8"                      |
| Width folded                  | 2.55 m                    | 8' 4"                      |
| Max. operating pressure       | 360 bar                   | 5220 psi                   |
| Recommended pump capacity     | from 60 l/min to 80 l/min | 15.9 US gpm to 21.1 US gpm |
| Dead weight (std.)            | 1700 kg                   | 3750 lb                    |