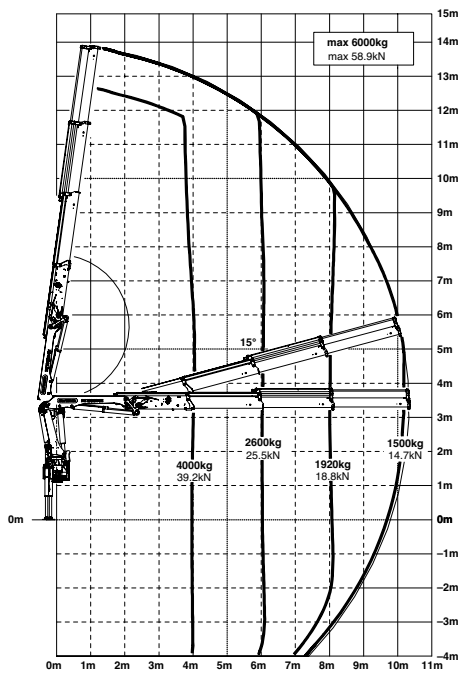


PK 18002 EH

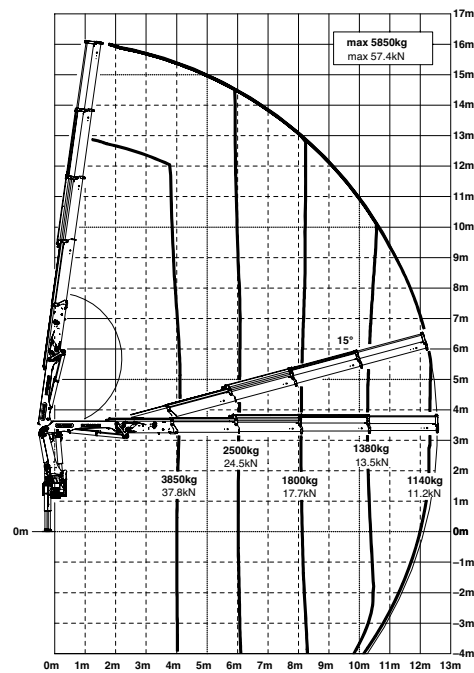
HIGH PERFORMANCE

Equipment for exacting demands.

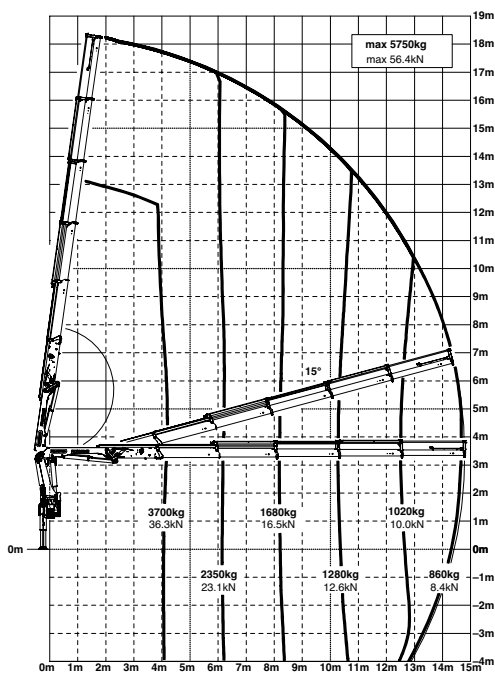
B



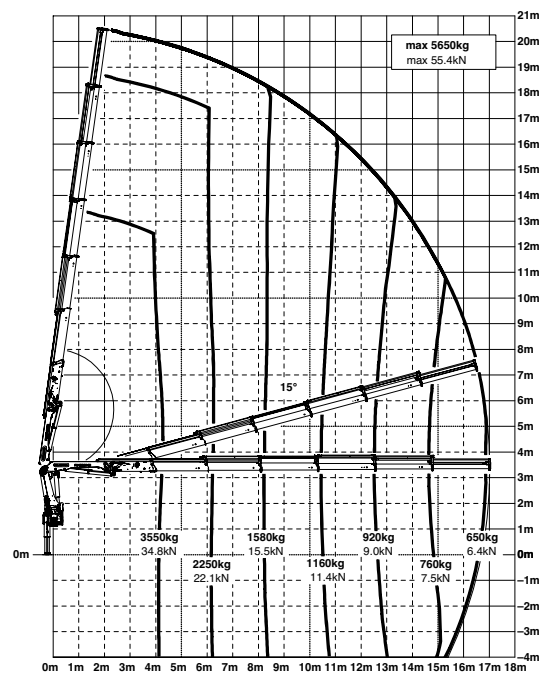
C



D



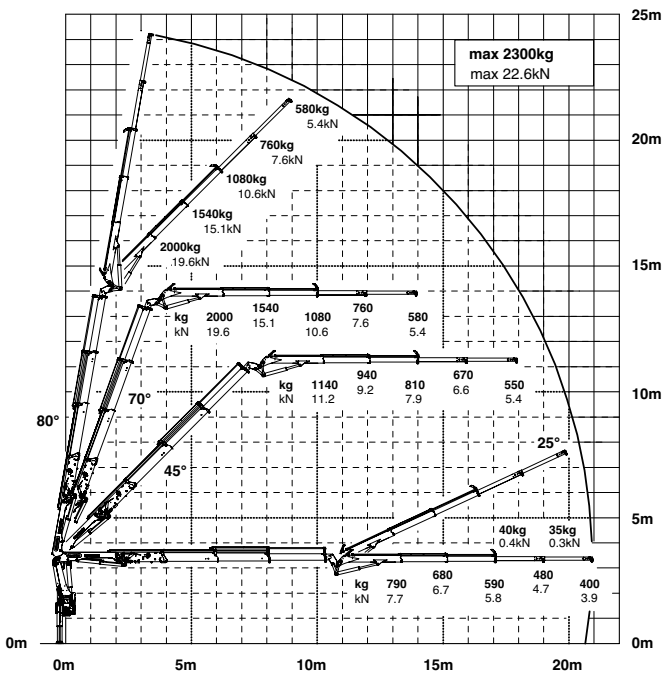
E



The outreaches stated are with a boom angle of 20° and are therefore not the maximum.

Lifting capacities

B PJ060A JV2



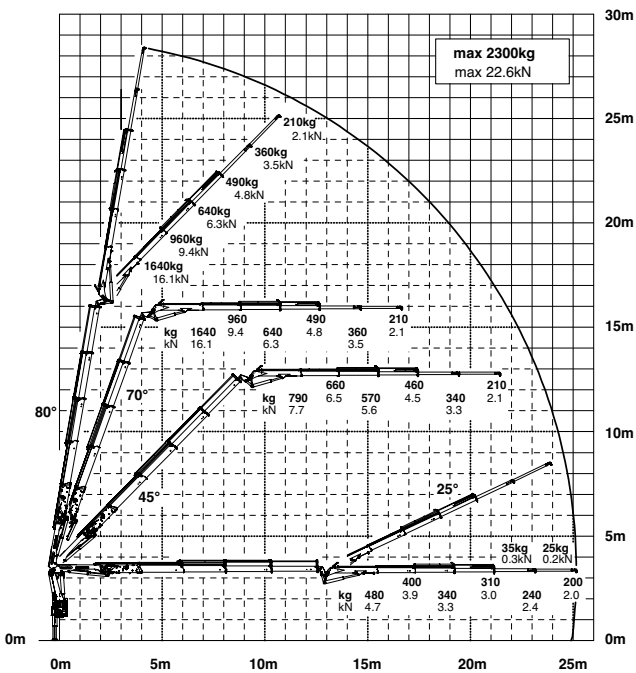
max.		6100 kg	59.8 kN	A
3.9 m	12' 10"	4200 kg	9200 lbs	
5.9 m	19' 4"	2750 kg	6100 lbs	
7.9 m	25' 11"	2050 kg	4500 lbs	

max.		6000 kg	58.9 kN	B
4.0 m	13' 1"	4000 kg	8800 lbs	
6.0 m	19' 8"	2600 kg	5800 lbs	
8.0 m	26' 3"	1920 kg	4250 lbs	
10.1 m	33' 2"	1500 kg	3300 lbs	
12.4 m*	40' 8"	1160 kg	2560 lbs	
14.6 m*	47' 11"	930 kg	2050 lbs	

max.		5850 kg	57.4 kN	C
4.1 m	13' 5"	3850 kg	8500 lbs	
6.1 m	20' 0"	2500 kg	5500 lbs	
8.1 m	26' 7"	1800 kg	3950 lbs	
10.2 m	33' 6"	1380 kg	3050 lbs	
12.4 m	40' 8"	1140 kg	2500 lbs	
14.6 m*	47' 11"	910 kg	2010 lbs	
16.8 m*	55' 1"	730 kg	1610 lbs	

max.		5750 kg	56.4 kN	D
4.2 m	13' 9"	3700 kg	8200 lbs	
6.2 m	20' 4"	2350 kg	5200 lbs	
8.2 m	26' 11"	1680 kg	3700 lbs	
10.3 m	33' 10"	1280 kg	2800 lbs	
12.5 m	41' 0"	1020 kg	2250 lbs	
14.6 m	47' 11"	860 kg	1900 lbs	
16.8 m*	55' 1"	700 kg	1550 lbs	
18.8 m*	61' 8"	580 kg	1280 lbs	

C PJ060B JV2



max.		5650 kg	55.4 kN	E
4.3 m	14' 1"	3550 kg	7800 lbs	
6.3 m	20' 8"	2250 kg	4900 lbs	
8.3 m	27' 3"	1580 kg	3450 lbs	
10.4 m	34' 1"	1160 kg	2550 lbs	
12.6 m	41' 4"	920 kg	2050 lbs	
14.7 m	48' 3"	760 kg	1680 lbs	
16.8 m	55' 1"	650 kg	1440 lbs	
18.9 m*	62' 0"	550 kg	1220 lbs	

*mechanical extension